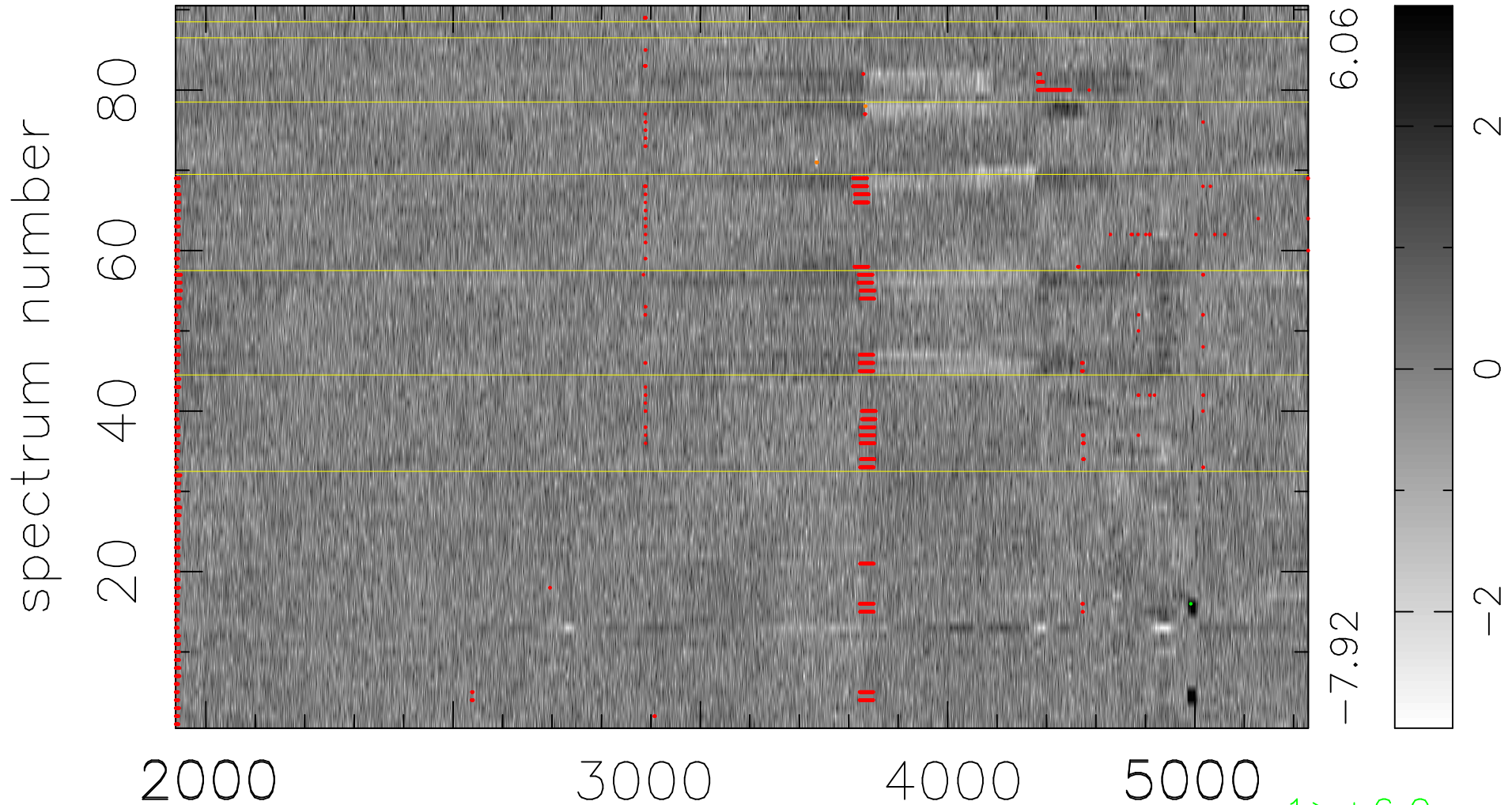


$$\chi(\lambda,t) = (\text{Data} - \text{Model } AC_5) / \sigma \chi$$

$$\chi^2 / (412380 - 4879) = 0.993 \Rightarrow 1.007$$

4582x90



bad:2669=0.65% λ (Å) $z = 0.85669$

1 > +6.0 σ

8 < -6.0 σ