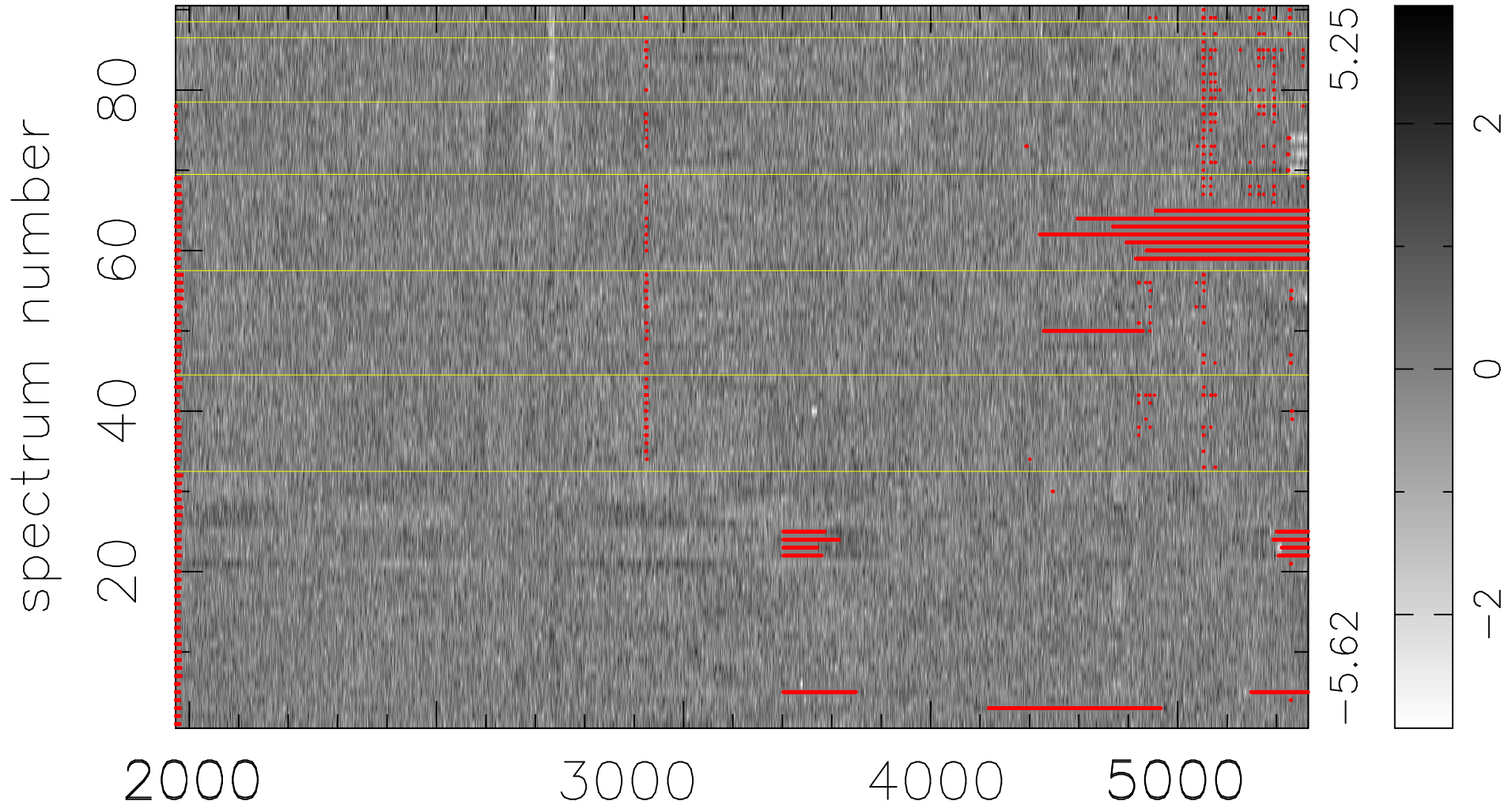


$$\chi(\lambda, t) = ( \text{Data} - \text{Model } \text{AC}_5\text{B}_3\text{F} ) / \sigma \chi$$

$$\chi^2 / (412650 - 5110) = 0.976 \Rightarrow 1.006$$

4585x90



bad:10146=2.5%    λ (Å)    z = 0.82628