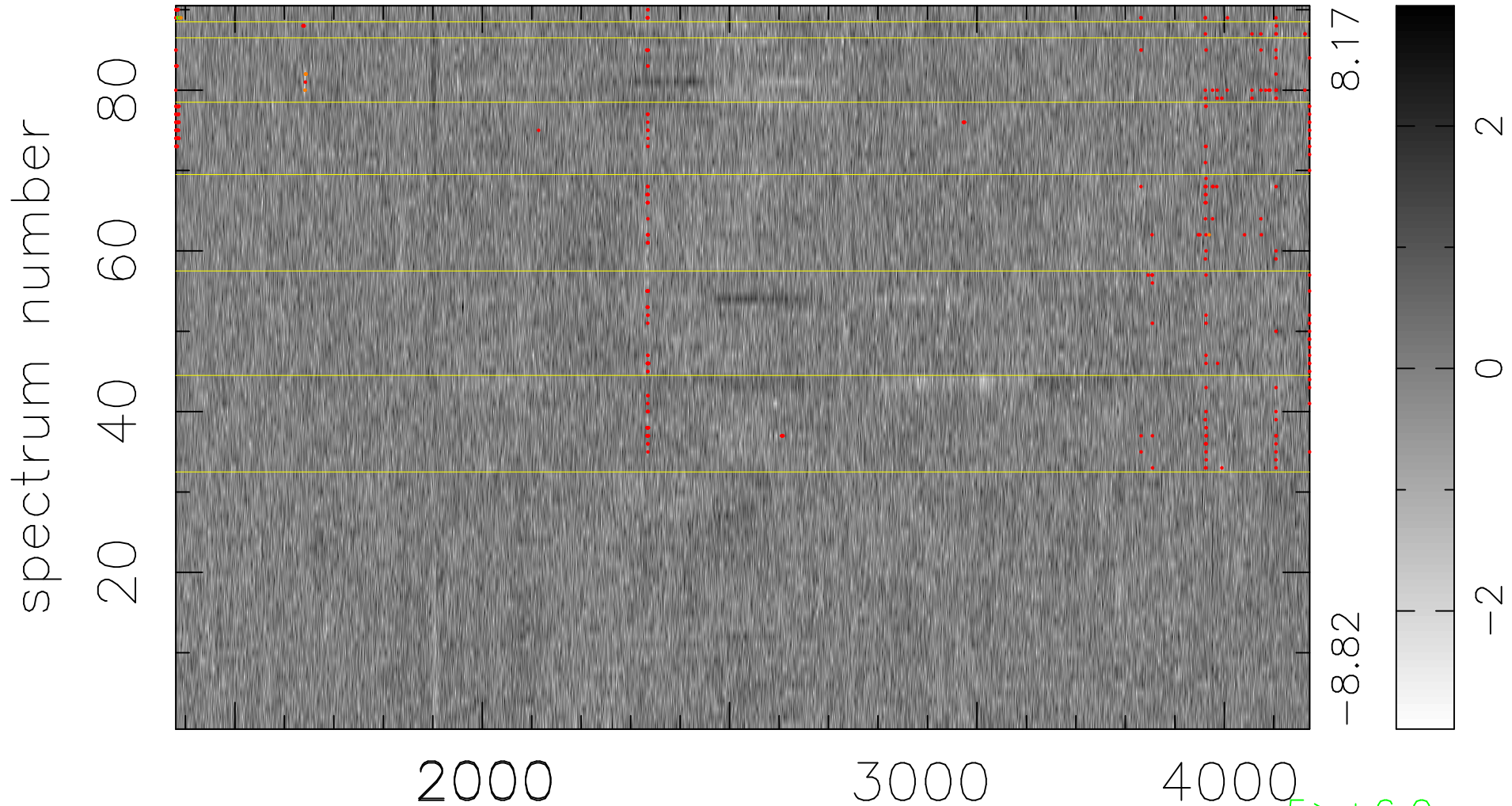


$$\chi(\lambda, t) = ( \text{Data} - \text{Model } \text{AC}_5\text{B}_4\text{F} ) / \sigma \chi$$

$$\chi^2 / (412650 - 5227) = 0.950 \Rightarrow 1.007$$

4585x90



bad:360=0.087%  $\lambda$  (Å)  $z = 1.39666$

5 > +6.0σ  
12 < -6.0σ