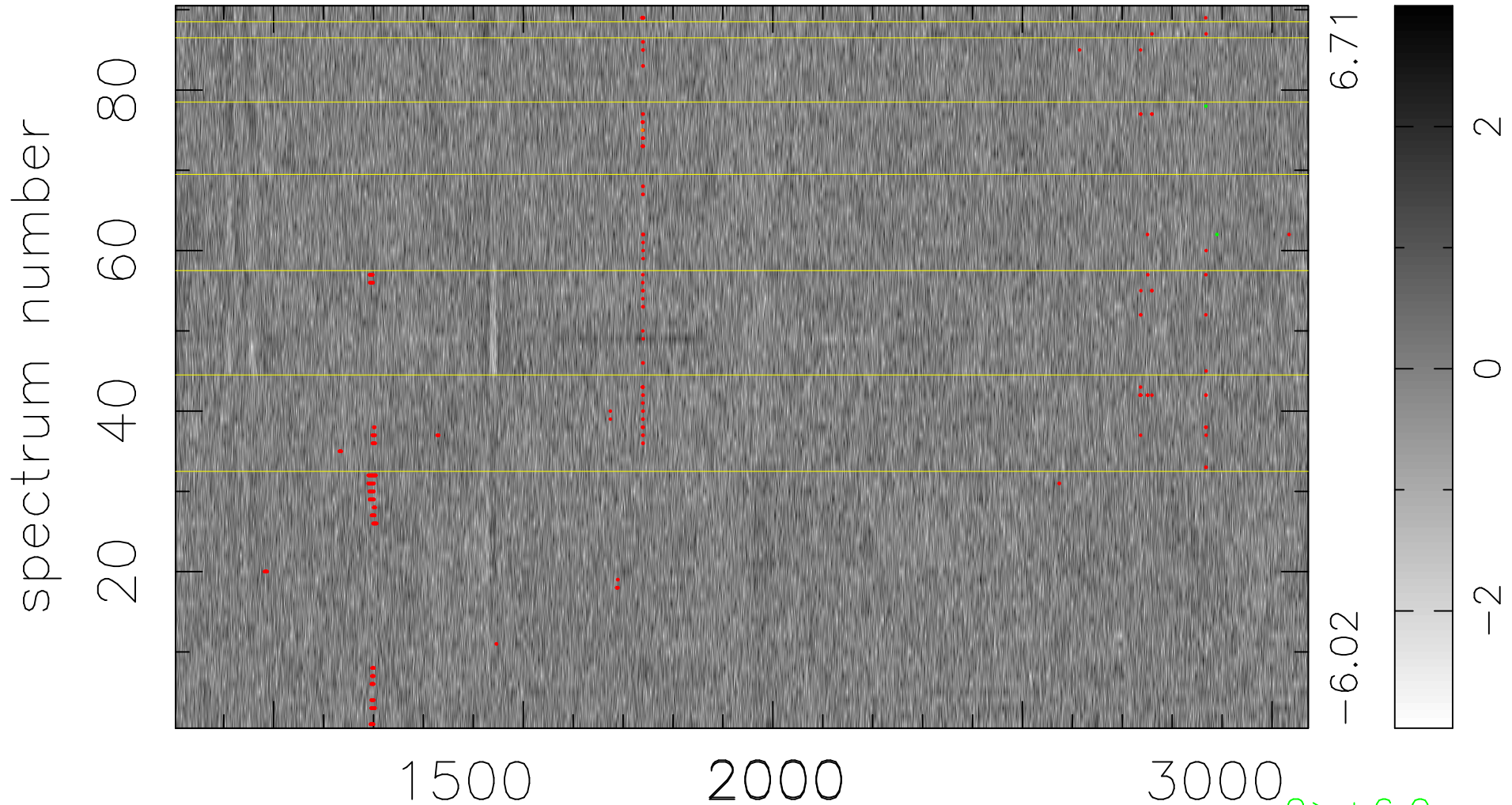


$$\chi(\lambda, t) = ( \text{Data} - \text{Model } \text{AC}_5\text{B}_7\text{F} ) / \sigma \chi$$

$$\chi^2 / (408510 - 5470) = 0.887 \Rightarrow 1.008$$

4539x90



bad:408=0.10%

$\lambda$  (Å)  $z = 2.15197$

2 > +6.0σ

1 < -6.0σ