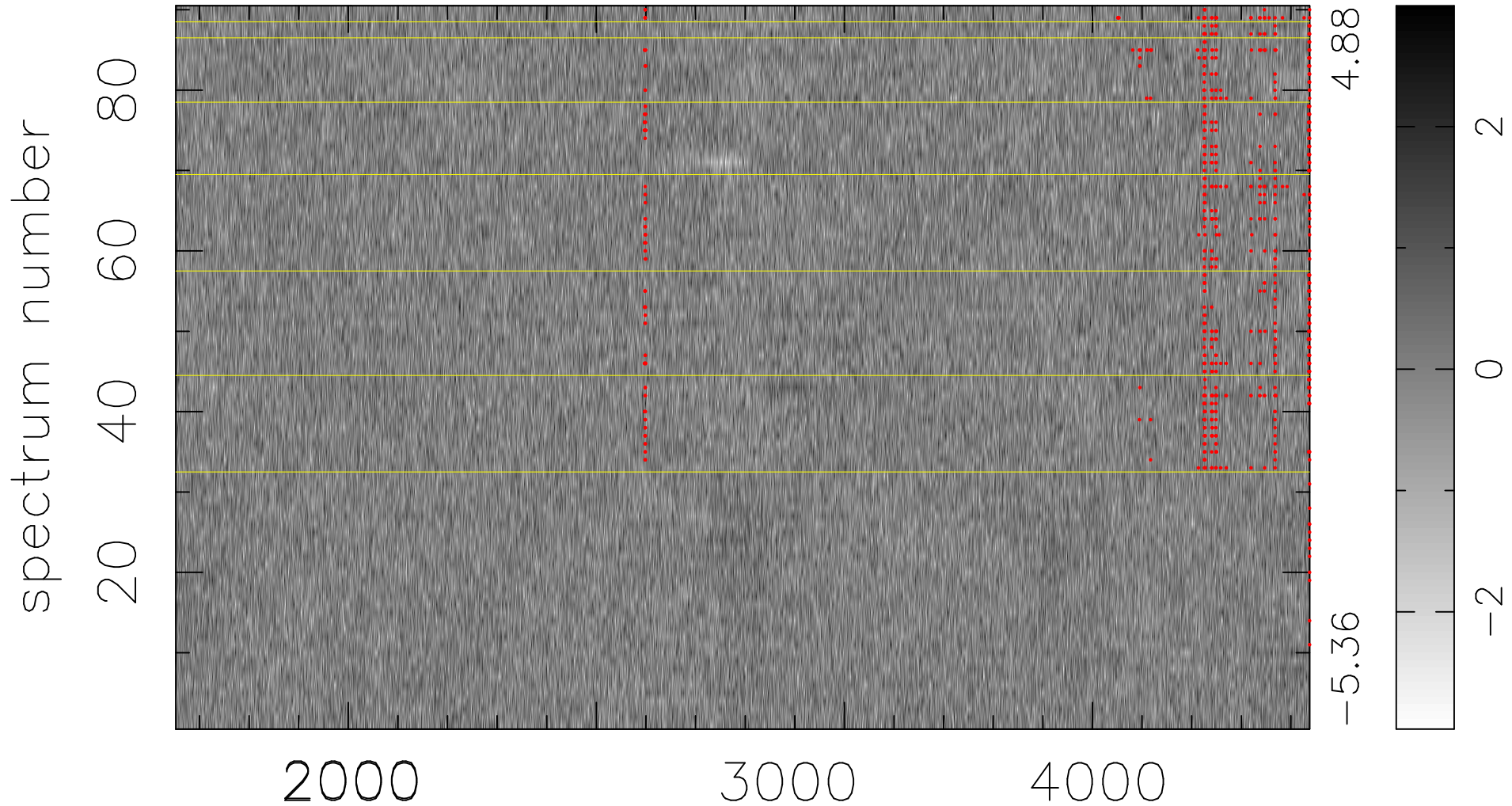


$$\chi(\lambda, t) = ( \text{Data} - \text{Model AC}_5\text{F} ) / \sigma \chi$$

$$\chi^2 / (411480 - 5039) = 0.889 \Rightarrow 1.007$$

4572 × 90



bad:694=0.17%     $\lambda$  (Å)     $z = 1.12250$