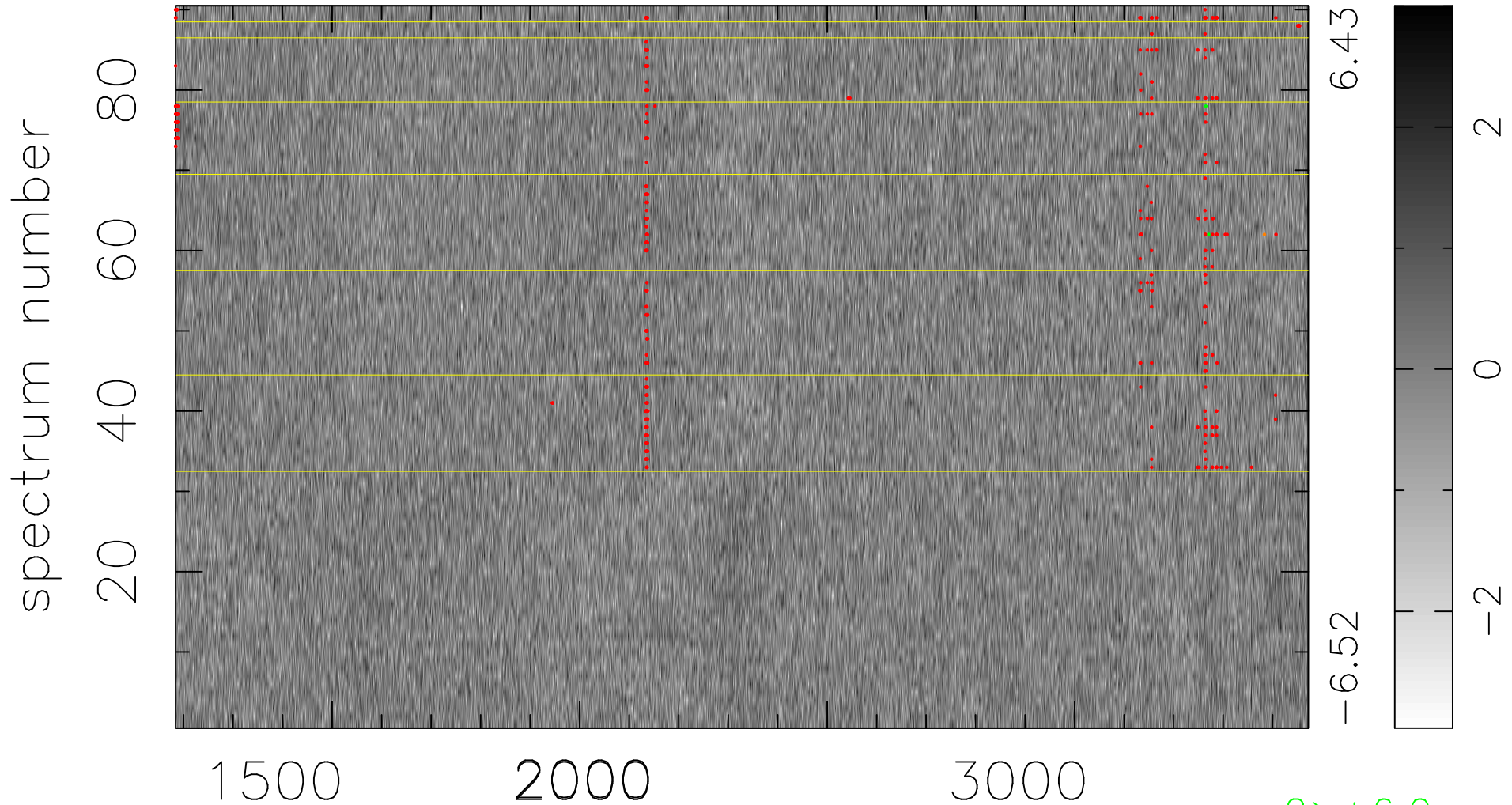


$$\chi(\lambda, t) = (\text{Data} - \text{Model } \text{AC}_5\text{B}_5\text{F}) / \sigma \chi$$

$$\chi^2 / (411930 - 5281) = 0.991 \Rightarrow 1.008$$

4577x90



bad:444=0.11%

λ (Å) $z = 1.62621$

2 > +6.0σ

1 < -6.0σ