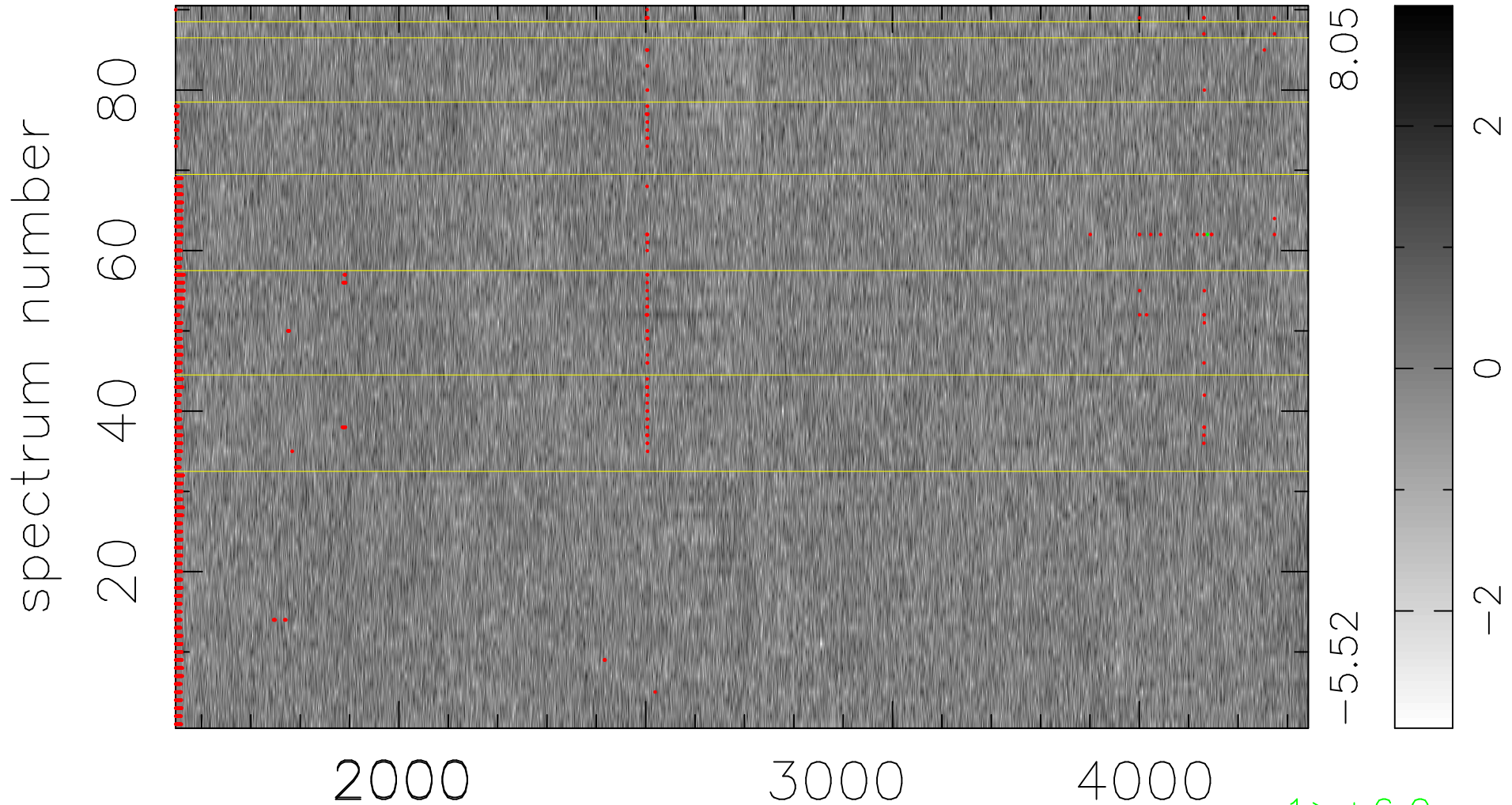


$$\chi(\lambda, t) = (\text{Data} - \text{Model } \text{AC}_5\text{B}_3\text{F}) / \sigma \chi$$

$$\chi^2 / (413100 - 5139) = 0.902 \Rightarrow 1.008$$

4590x90



bad:1938=0.47% λ (Å) $z = 1.21763$