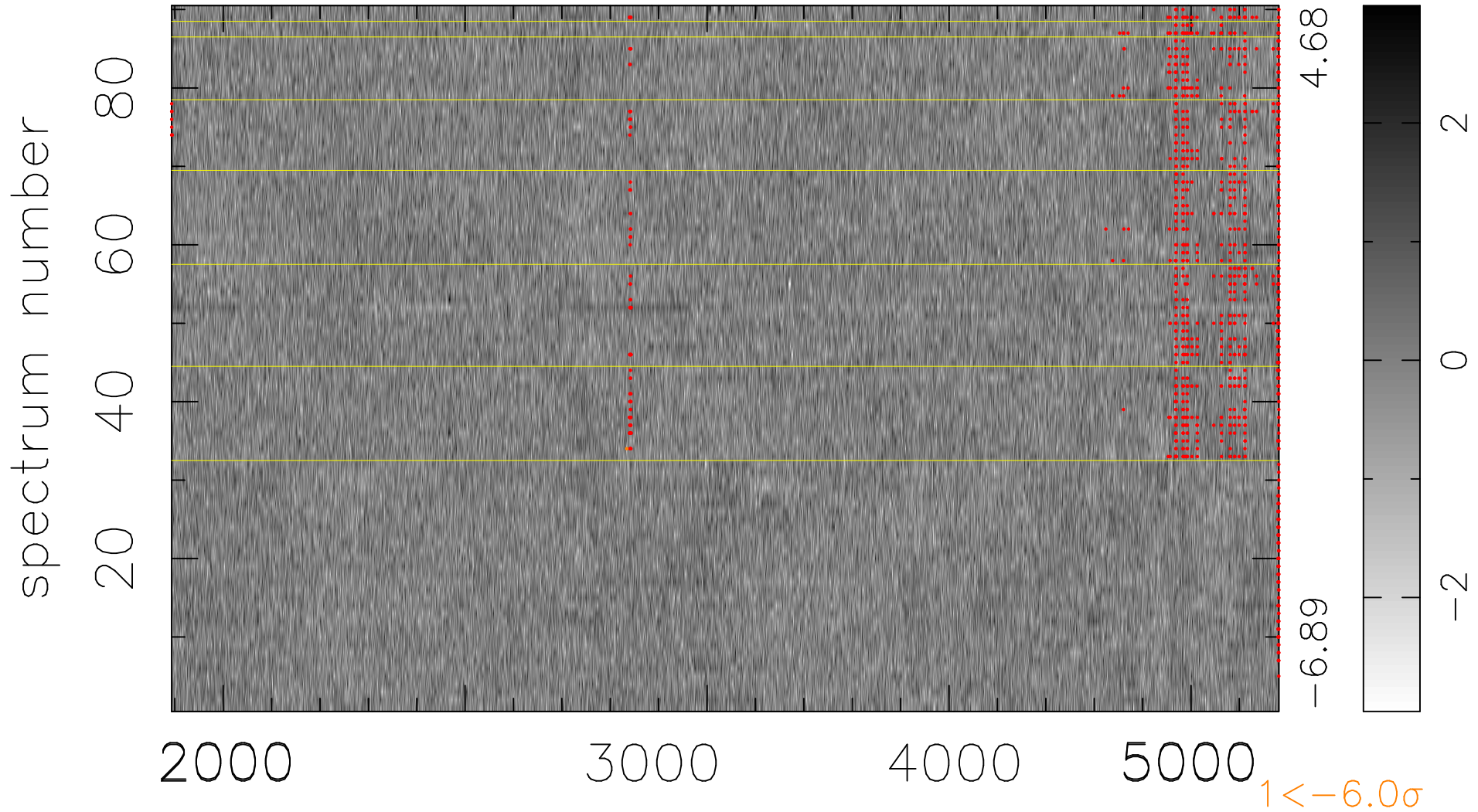


$$\chi(\lambda, t) = ( \text{Data} - \text{Model AC}_5\text{F} ) / \sigma \chi$$

$$\chi^2 / (411930 - 5045) = 0.996 \Rightarrow 1.005$$

4577 × 90



bad:1071=0.26%  $\lambda$  (Å)  $z = 0.89755$