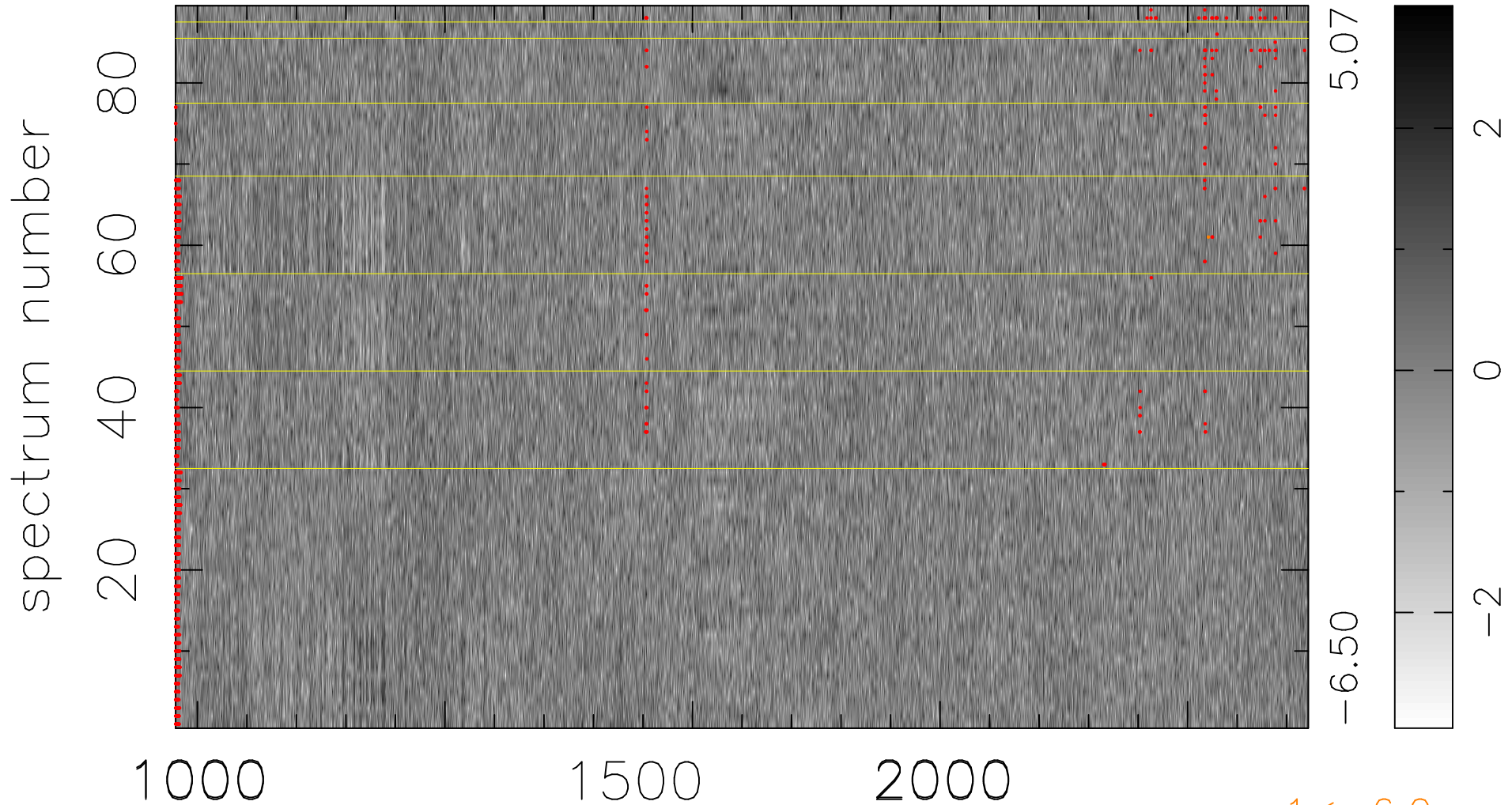


$$\chi(\lambda, t) = (\text{Data} - \text{Model } \text{AC}_5\text{B}_7\text{F}) / \sigma \chi$$

$$\chi^2 / (407264 - 5471) = 0.924 \Rightarrow 1.009$$

4576 × 89



bad:1257=0.31% λ (Å) $z = 2.67359$

1 < -6.0σ