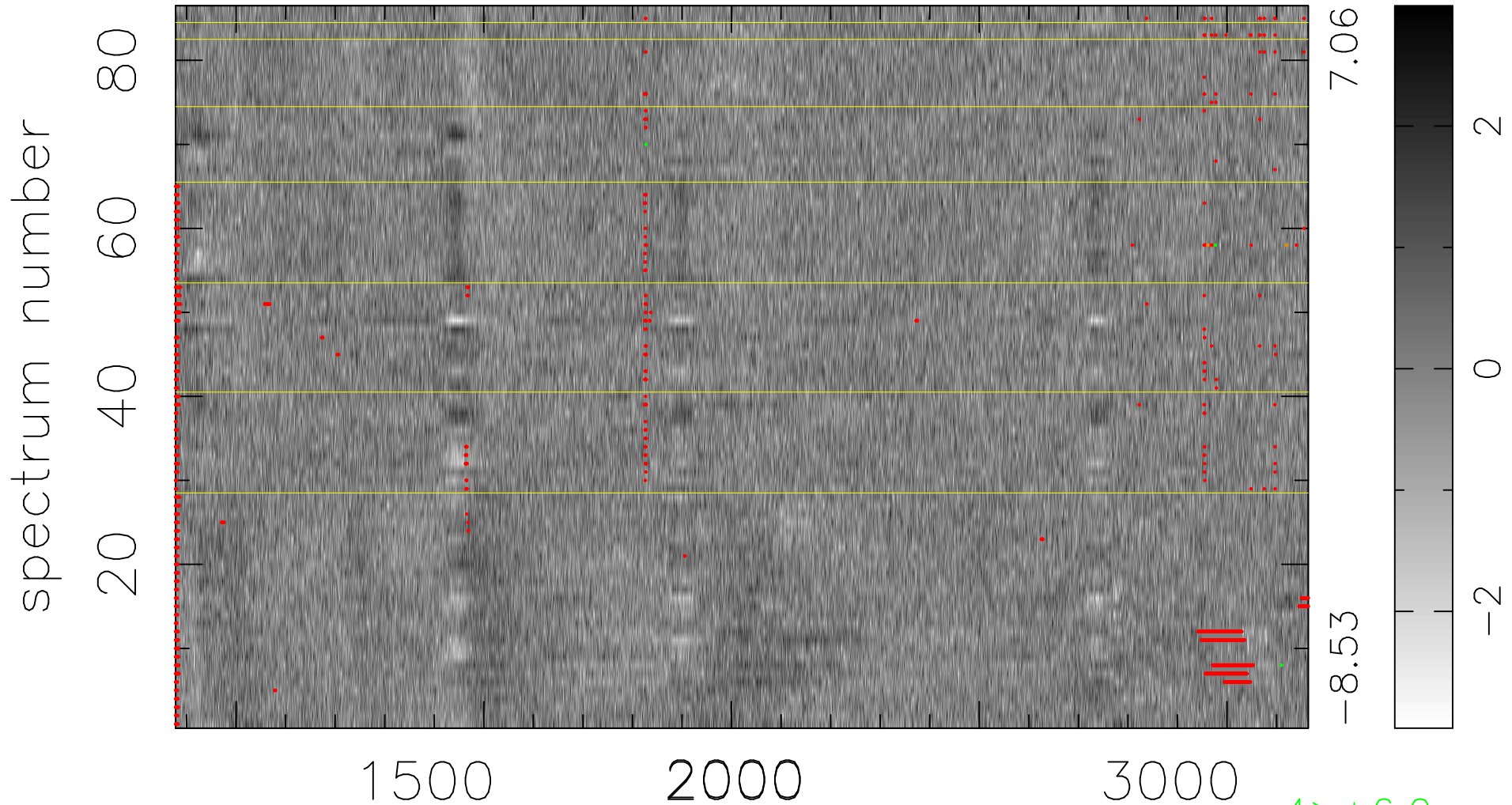


$$\chi(\lambda, t) = (\text{Data} - \text{Model AC}_5\text{F}) / \sigma \chi$$

$$\chi^2 / (393278 - 5304) = 1.034 \Rightarrow 1.008$$

4573x86



bad:1865=0.47% λ (Å) $z = 2.02842$

4 > +6.0 σ

2 < -6.0 σ