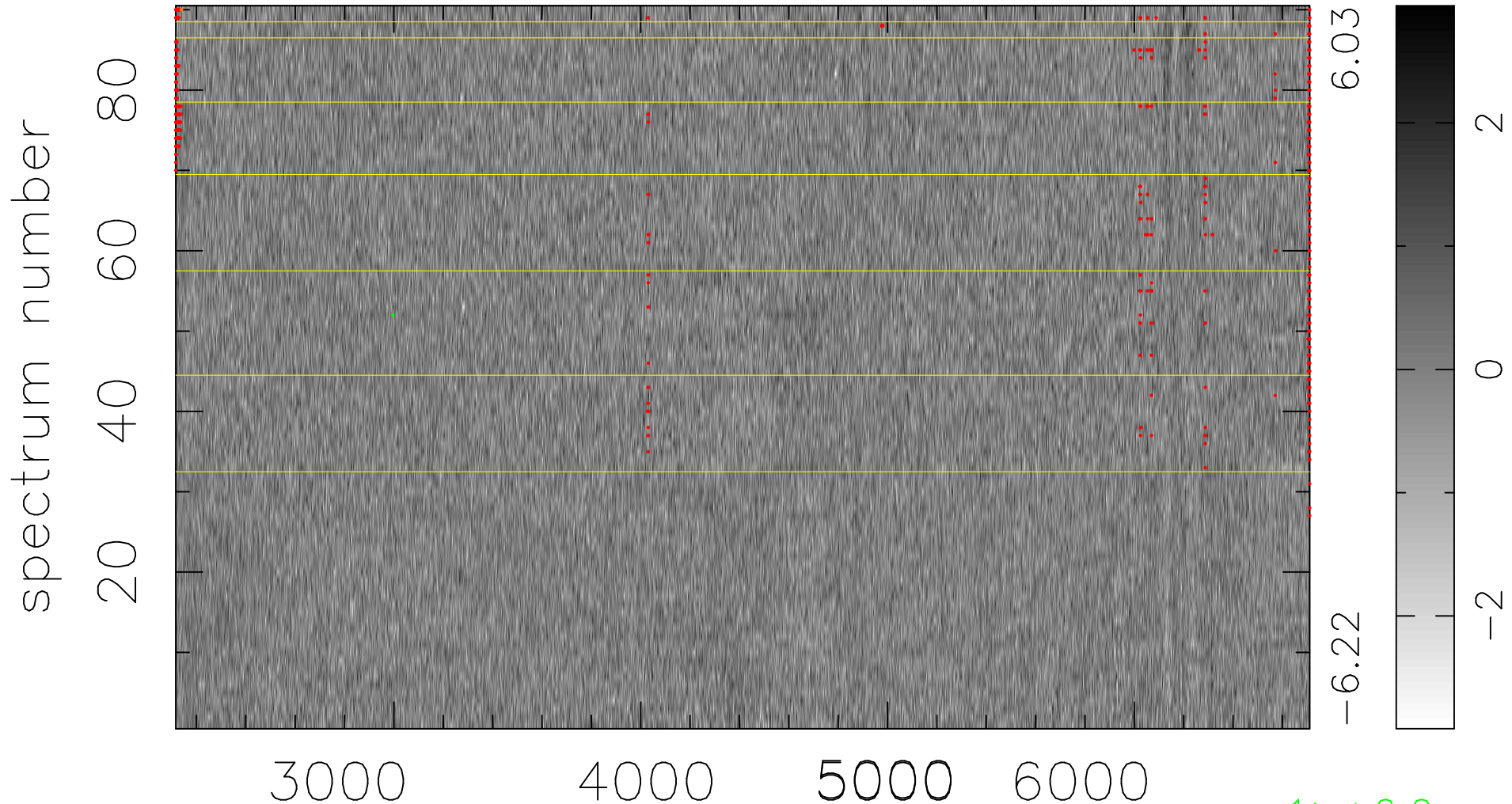


$$\chi(\lambda, t) = ( \text{Data} - \text{Model } \text{AC}_5\text{B}_4\text{F} ) / \sigma \chi$$

$$\chi^2 / (413550 - 5217) = 0.907 \Rightarrow 0.990$$

4595x90



bad:545=0.13%

$\lambda$  (Å)  $z = 0.39148$

1 > +6.0σ

1 < -6.0σ