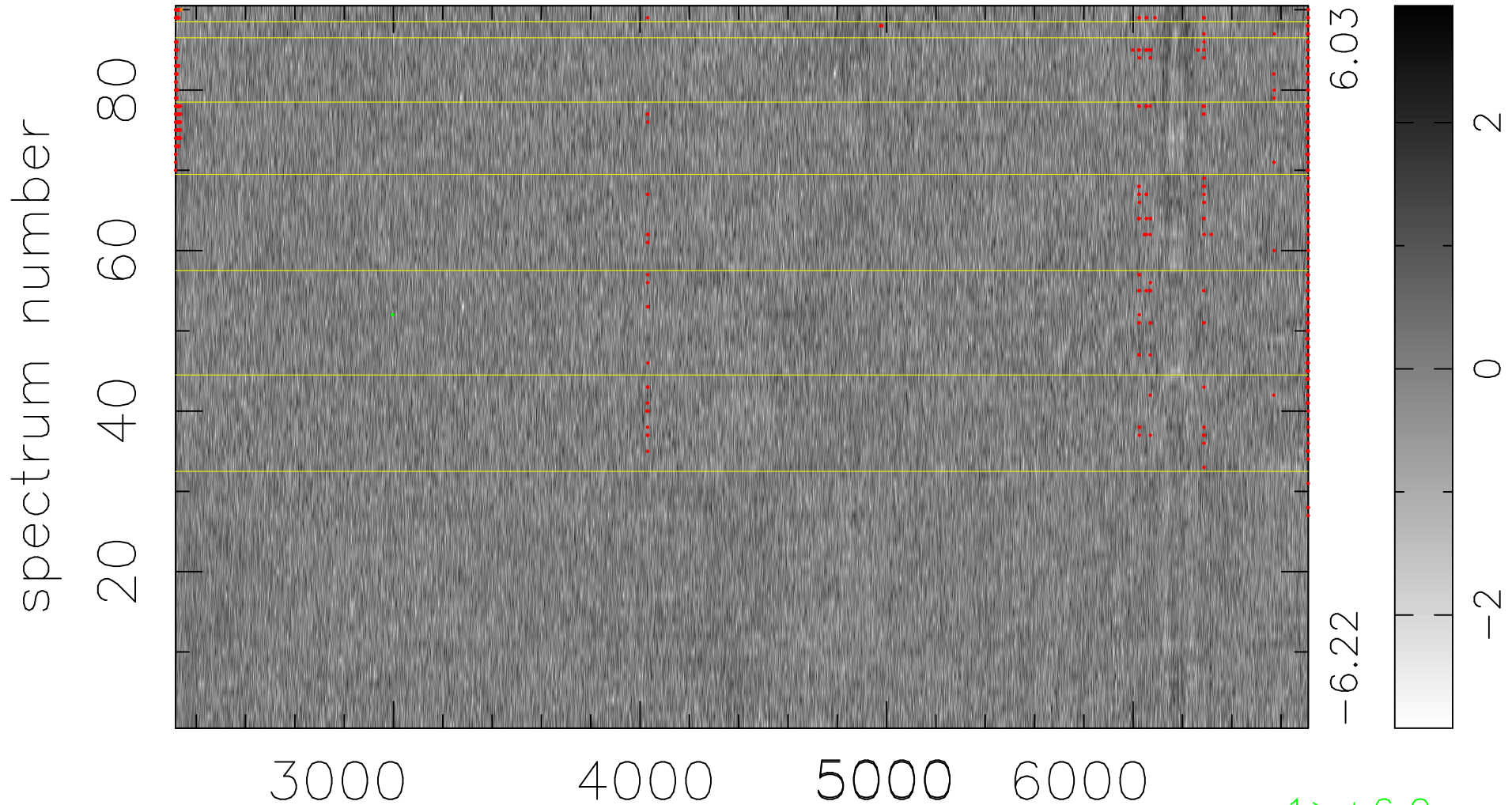


$$\chi(\lambda, t) = (\text{Data} - \text{Model AC}_5\text{F}) / \sigma \chi$$

$$\chi^2 / (413550 - 5063) = 0.910 \Rightarrow 0.991$$

4595x90



bad:545=0.13%

λ (Å) $z = 0.39148$

1 > +6.0σ

1 < -6.0σ