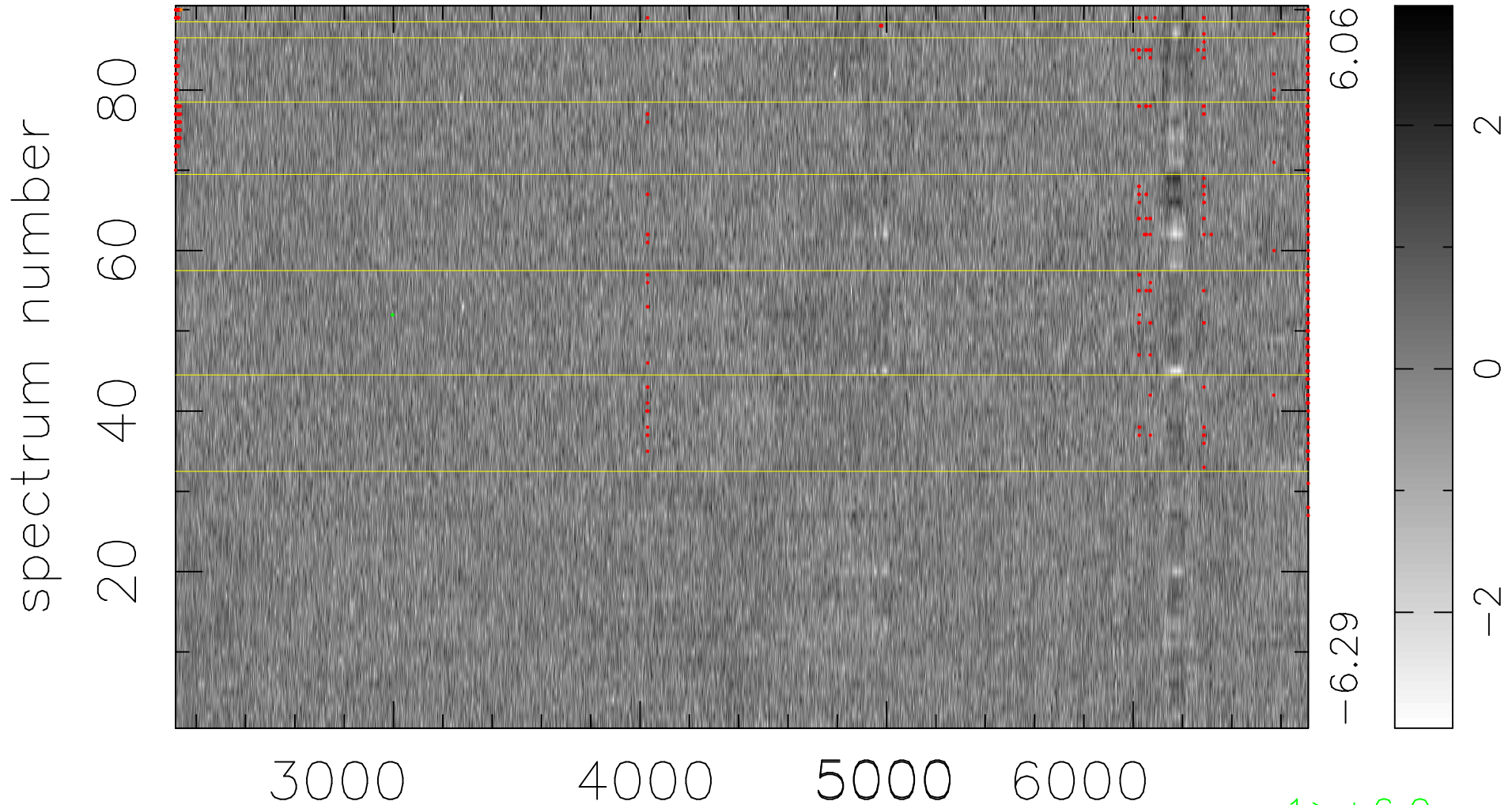


$$\chi(\lambda,t) = (\text{Data} - \text{Model } AC_5) / \sigma \chi$$

$$\chi^2 / (413550 - 4973) = 0.925 \Rightarrow 1.002$$

4595x90



bad:545=0.13%

λ (Å) $z = 0.39148$

1 > +6.0σ

1 < -6.0σ