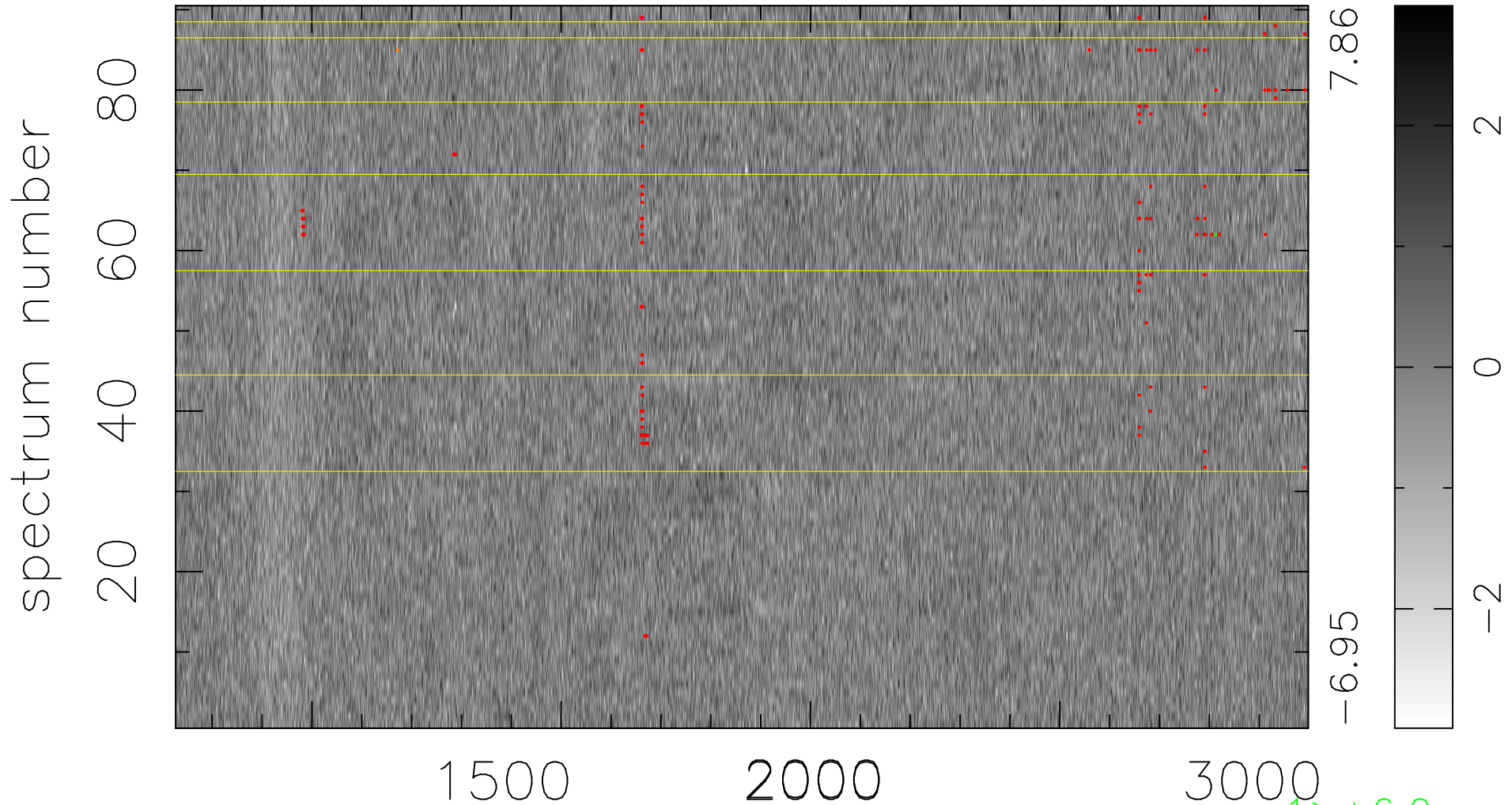


$$\chi(\lambda, t) = (\text{Data} - \text{Model } \text{AC}_5\text{B}_7\text{F}) / \sigma \chi$$

$$\chi^2 / (408960 - 5419) = 0.899 \Rightarrow 1.009$$

4544x90



bad:208=0.051% λ (Å) $z = 2.26626$

$\uparrow > +6.0\sigma$
 $\downarrow < -6.0\sigma$