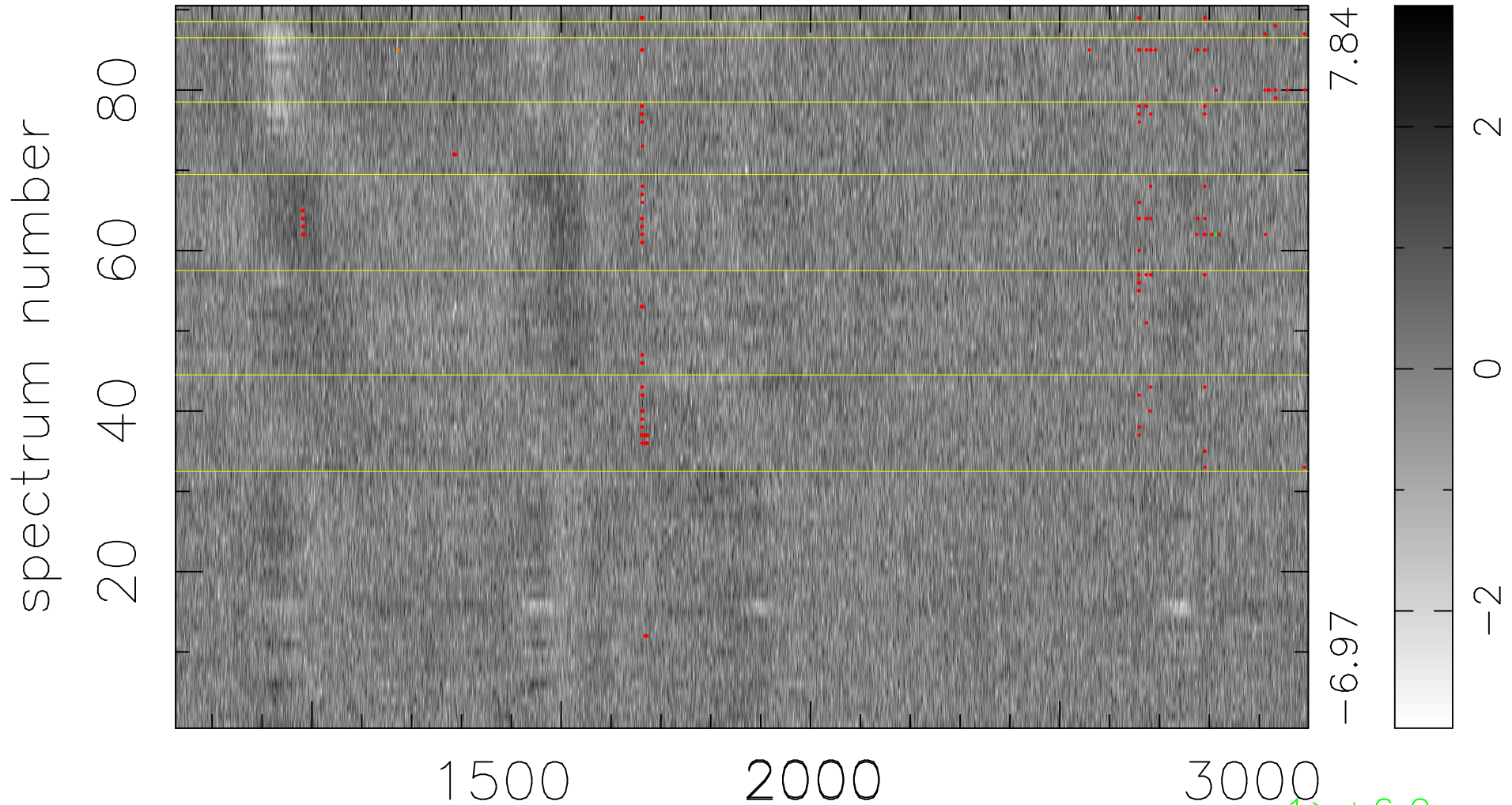


$$\chi(\lambda,t) = (\text{Data} - \text{Model } AC_5) / \sigma \chi$$

$$\chi^2 / (408960 - 5216) = 0.919 \Rightarrow 1.007$$

4544x90



bad:208=0.051% λ (Å) $z = 2.26626$

$\uparrow > +6.0\sigma$
 $\downarrow < -6.0\sigma$