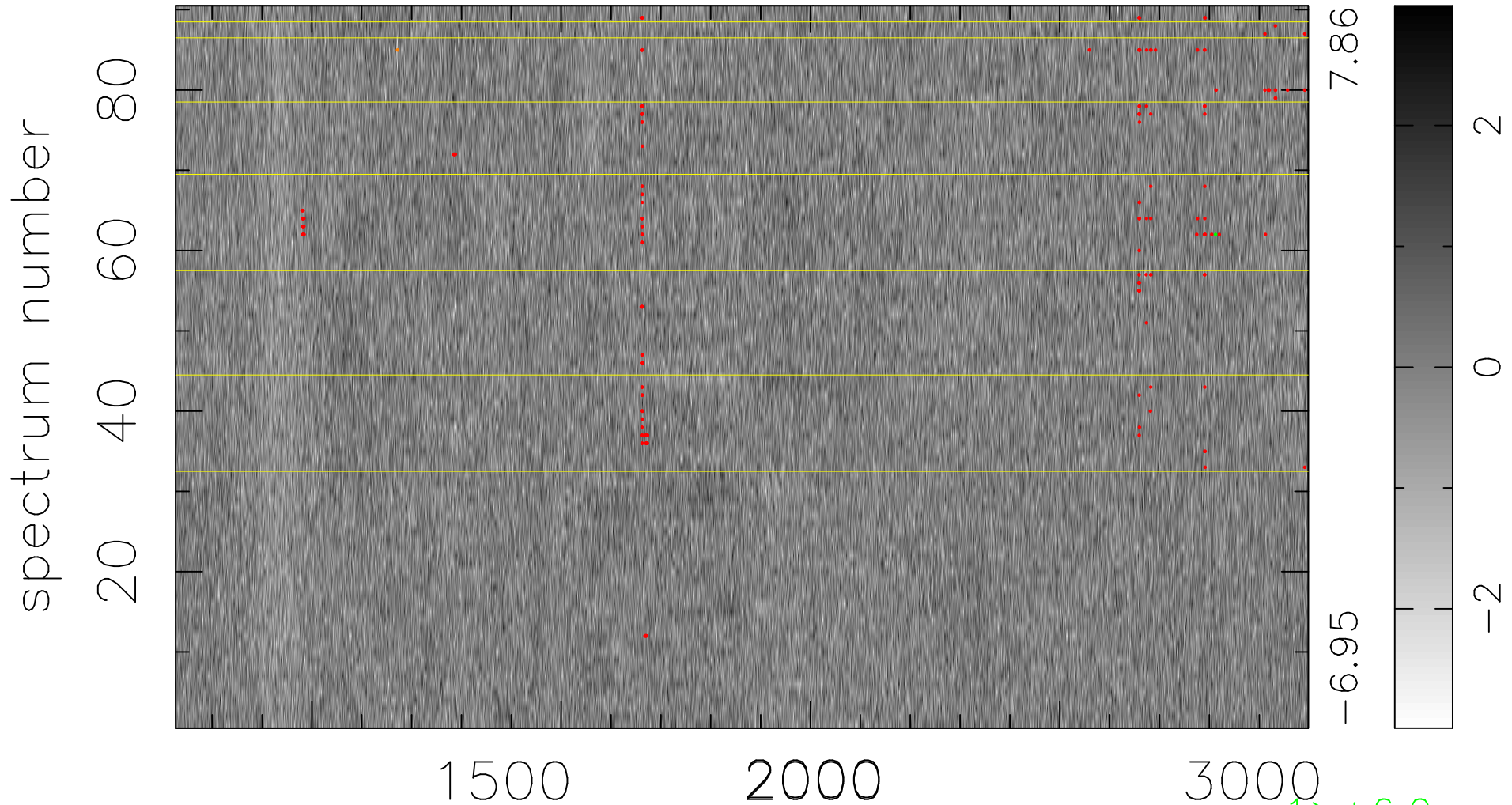


$$\chi(\lambda, t) = ( \text{Data} - \text{Model AC}_5\text{B}_7\text{F} ) / \sigma \chi$$

$$\chi^2 / (408960 - 5419) = 0.899 \Rightarrow 1.009$$

4544x90



7.86  
-6.95

2  
0  
-2

$\uparrow > +6.0\sigma$   
 $\downarrow < -6.0\sigma$

bad:208=0.051%  $\lambda$  (Å)  $z = 2.26626$