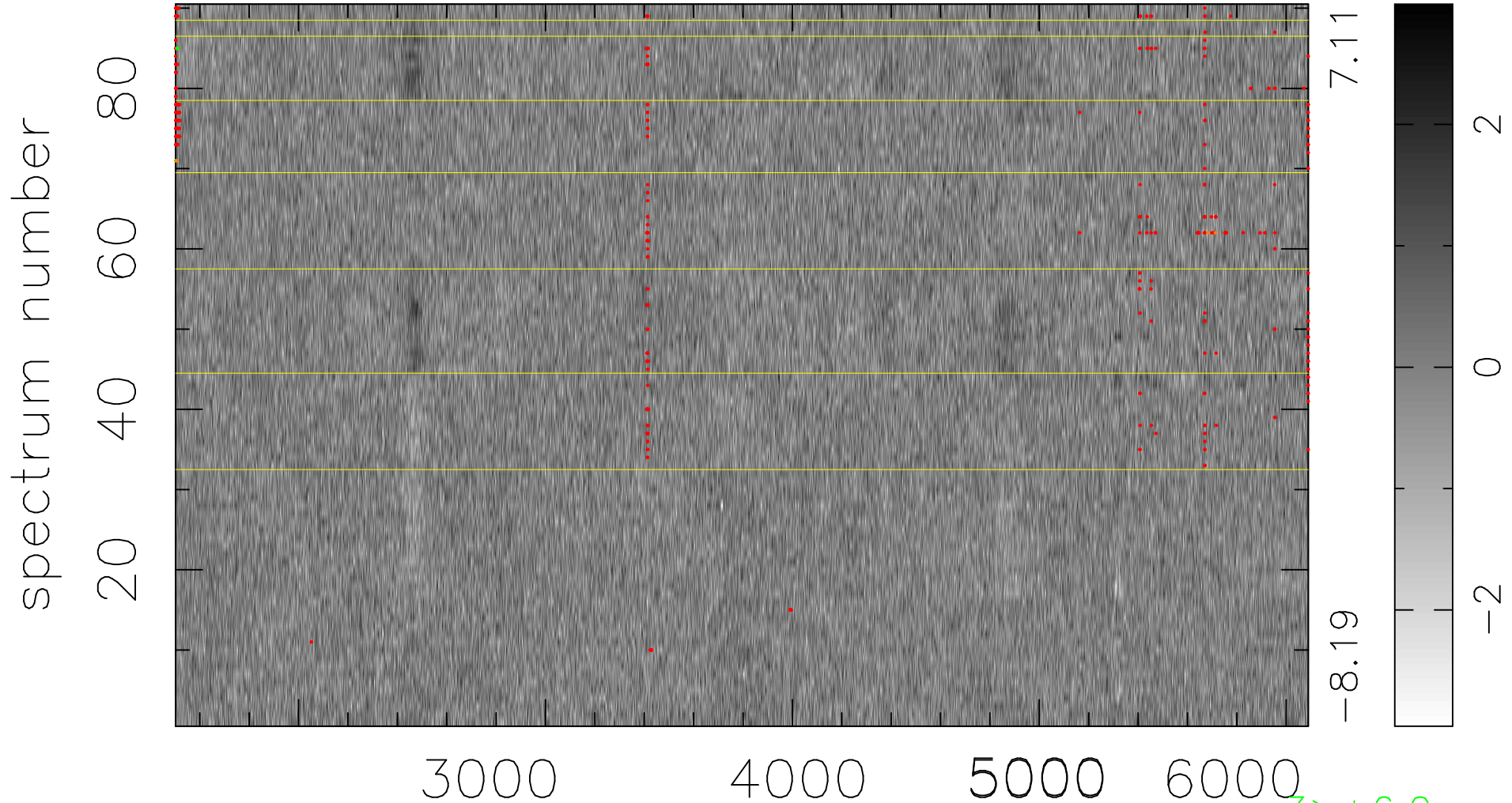


$$\chi(\lambda,t) = (\text{Data} - \text{Model } AC_5) / \sigma \chi$$

$$\chi^2 / (412920 - 4874) = 0.957 \Rightarrow 1.004$$

4588x90



3 > +6.0σ

5 < -6.0σ

bad:391=0.095% λ (Å) z = 0.60393