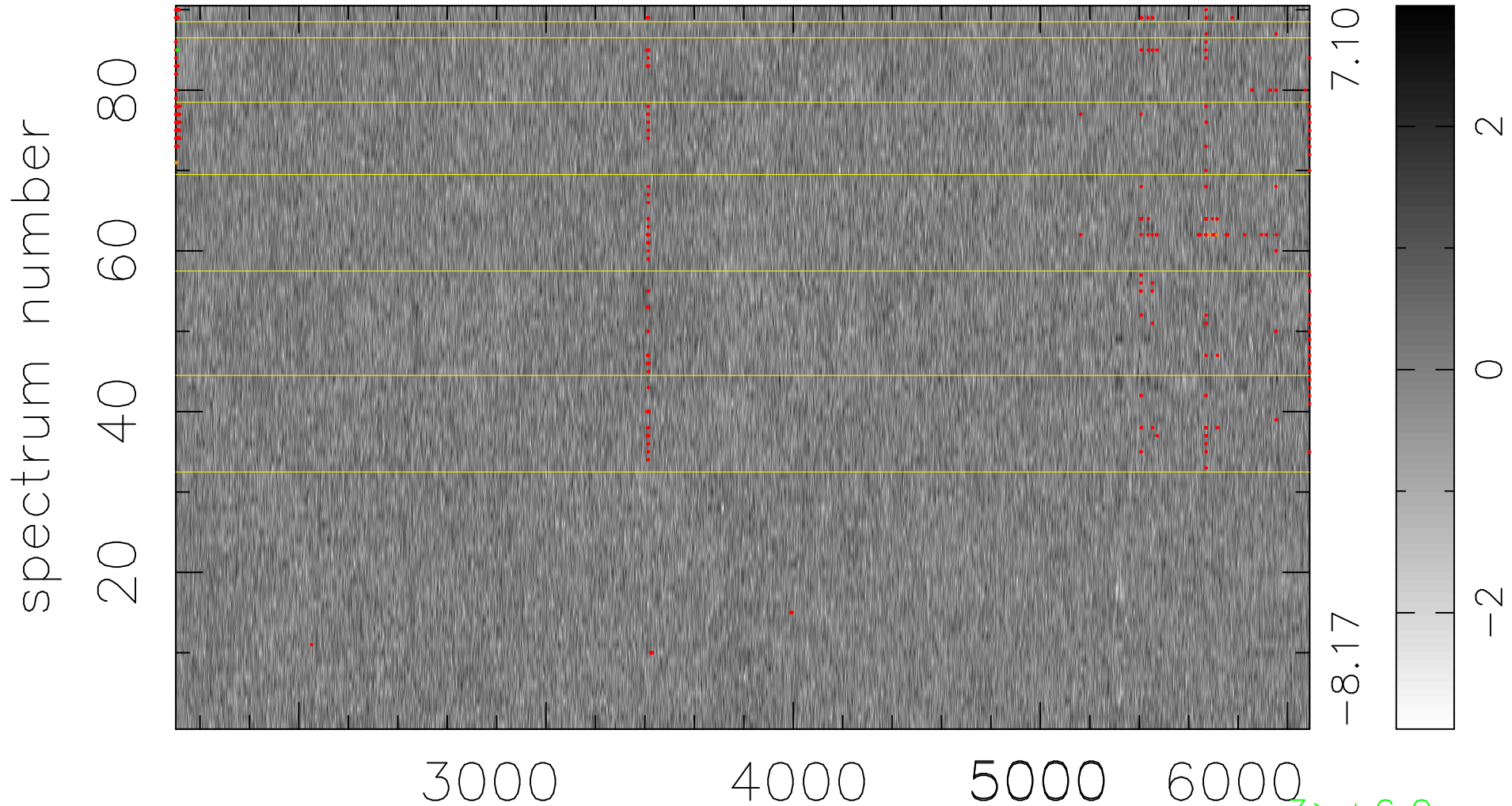


$$\chi(\lambda, t) = ( \text{Data} - \text{Model } \text{AC}_5\text{B}_3\text{F} ) / \sigma \chi$$

$$\chi^2 / (412920 - 5096) = 0.951 \Rightarrow 1.004$$

4588x90



bad:391=0.095%  $\lambda$  (Å)  $z = 0.60393$

3 > +6.0σ

5 < -6.0σ