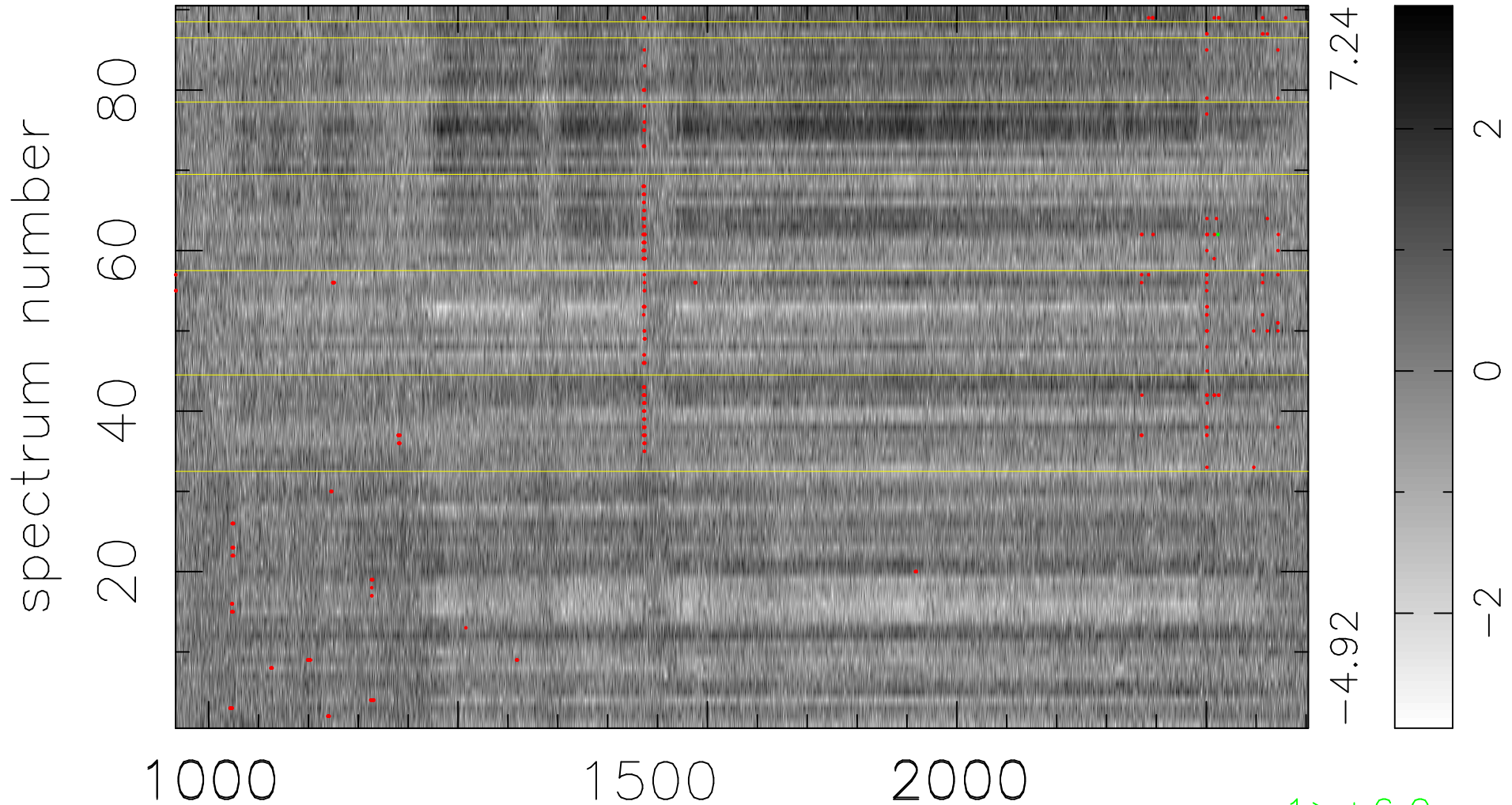


$$\chi(\lambda, t) = (\text{Data} - \text{Model A}) / \sigma \chi$$

$$\chi^2 / (408780 - 5119) = 1.300 \Rightarrow 1.007$$

4542x90



bad:342=0.084%  $\lambda$  (Å)  $z = 2.73096$

1 > +6.0 $\sigma$