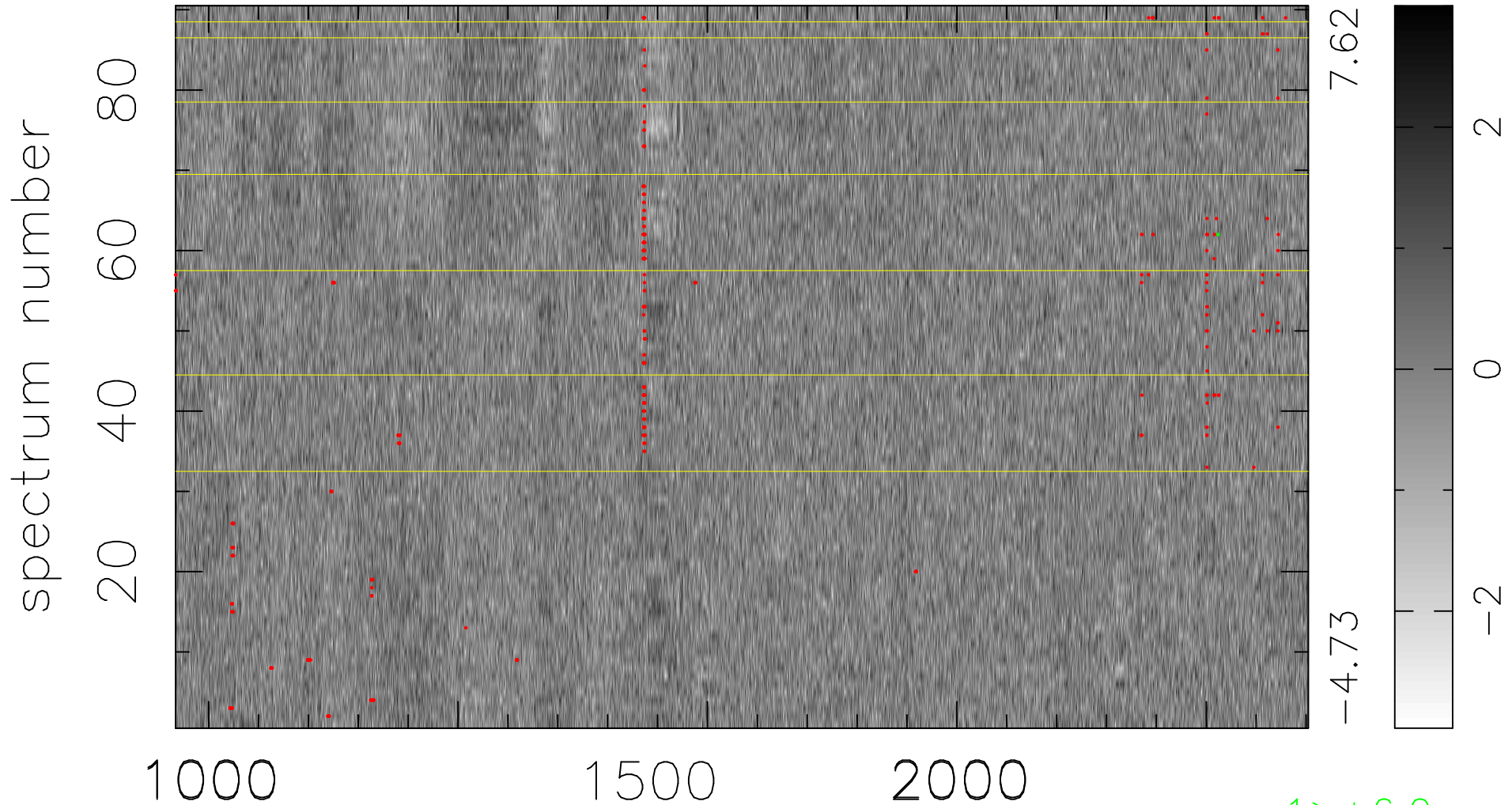


$$\chi(\lambda, t) = (\text{Data} - \text{Model } \text{AC}_5\text{B}_6\text{F}) / \sigma \chi$$

$$\chi^2 / (408780 - 5390) = 1.009 \Rightarrow 1.008$$

4542x90



bad:342=0.084% λ (Å) $z = 2.73096$

1 > +6.0 σ