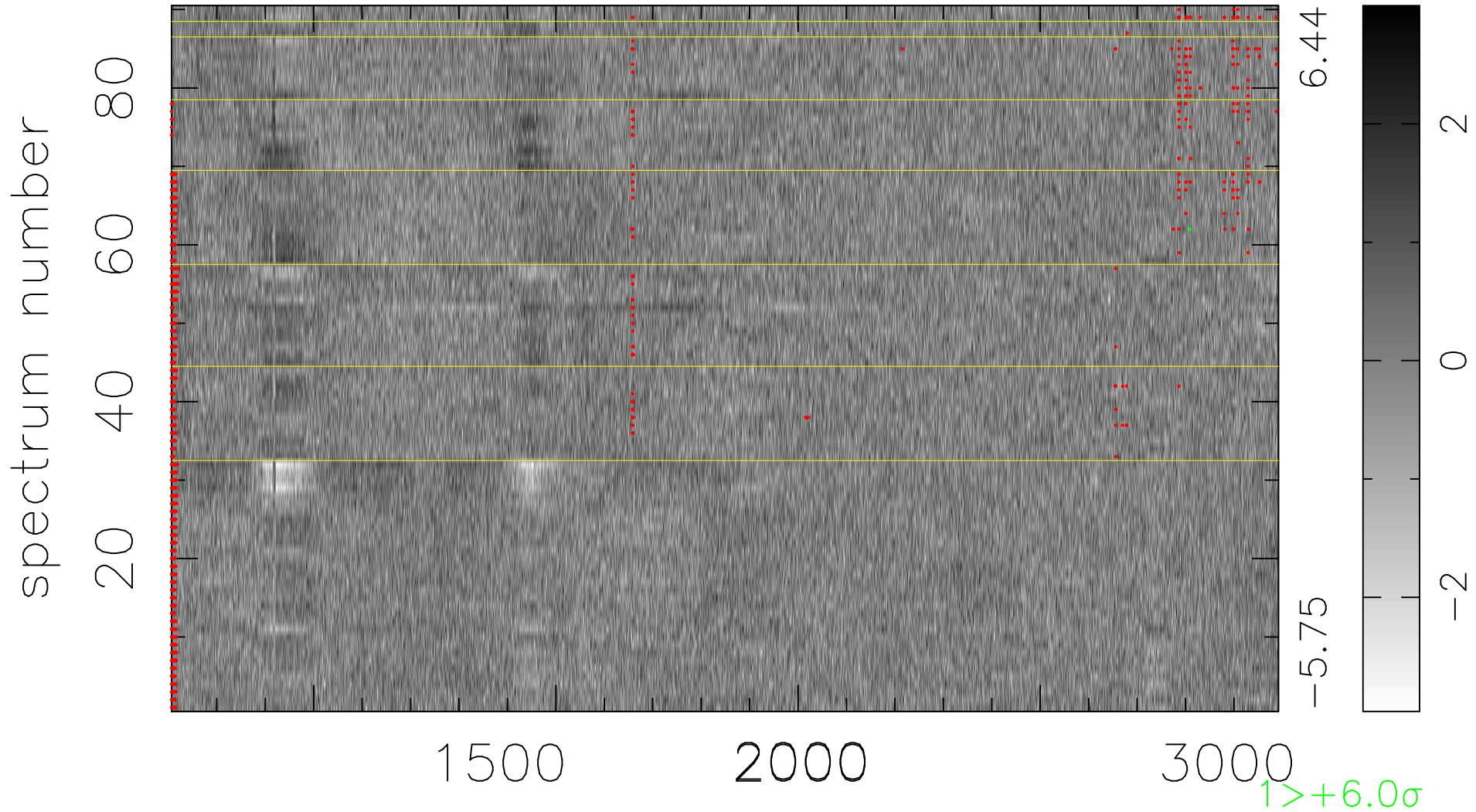


$$\chi(\lambda, t) = (\text{Data} - \text{Model } AC_5) / \sigma \chi$$

$$\chi^2 / (411390 - 5243) = 0.966 \Rightarrow 1.008$$

4571 × 90



bad:1492=0.36% λ (Å) $z = 2.27156$

$1 > +6.0\sigma$