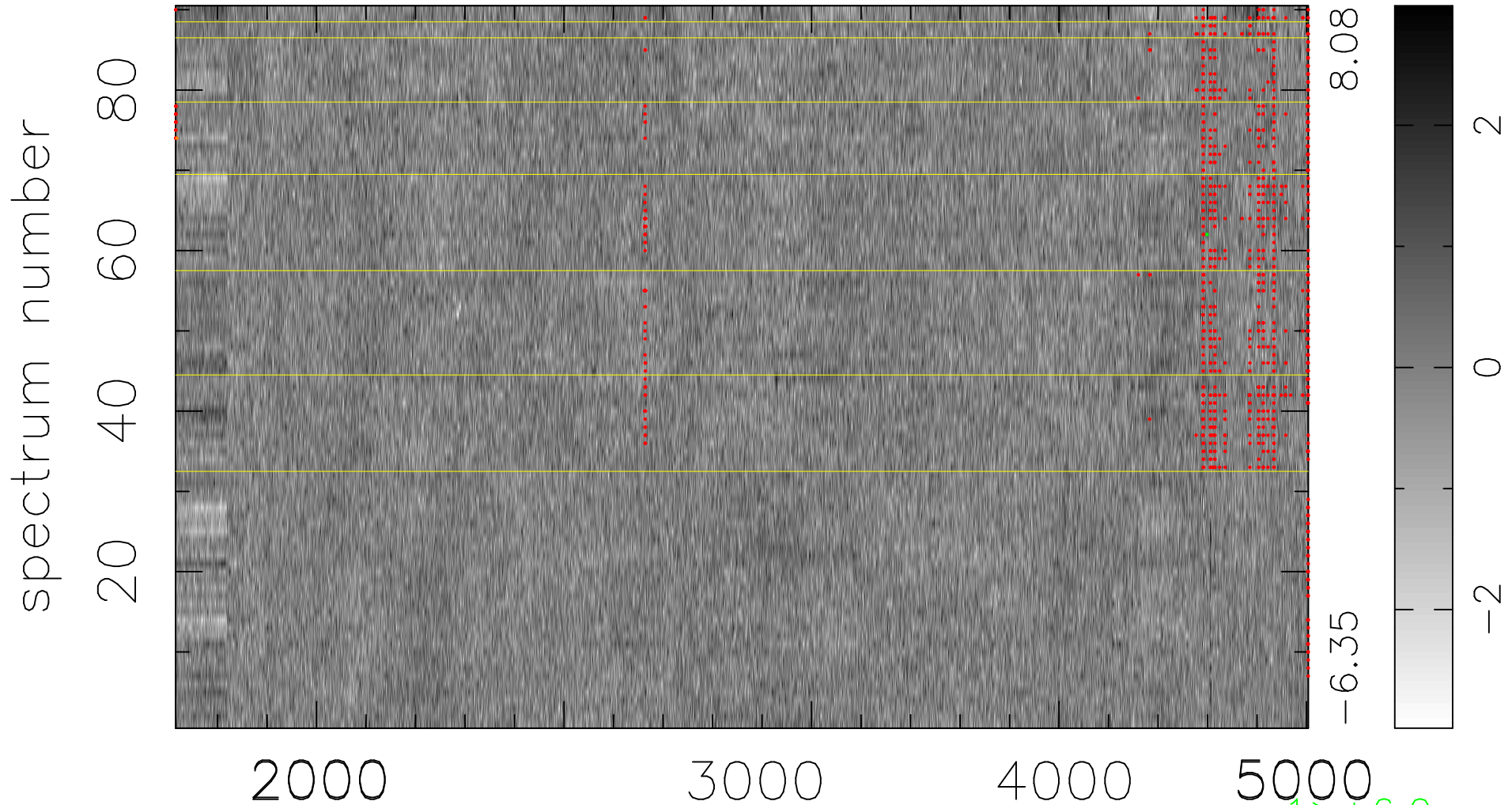


$$\chi(\lambda, t) = ( \text{Data} - \text{Model } \text{AC}_5\text{B}_4\text{F} ) / \sigma \chi$$

$$\chi^2 / (411930 - 5186) = 0.868 \Rightarrow 1.007$$

4577x90



bad:838=0.20%

$\lambda$  (Å)  $z = 1.05931$

$1 > +6.0\sigma$   
 $1 < -6.0\sigma$