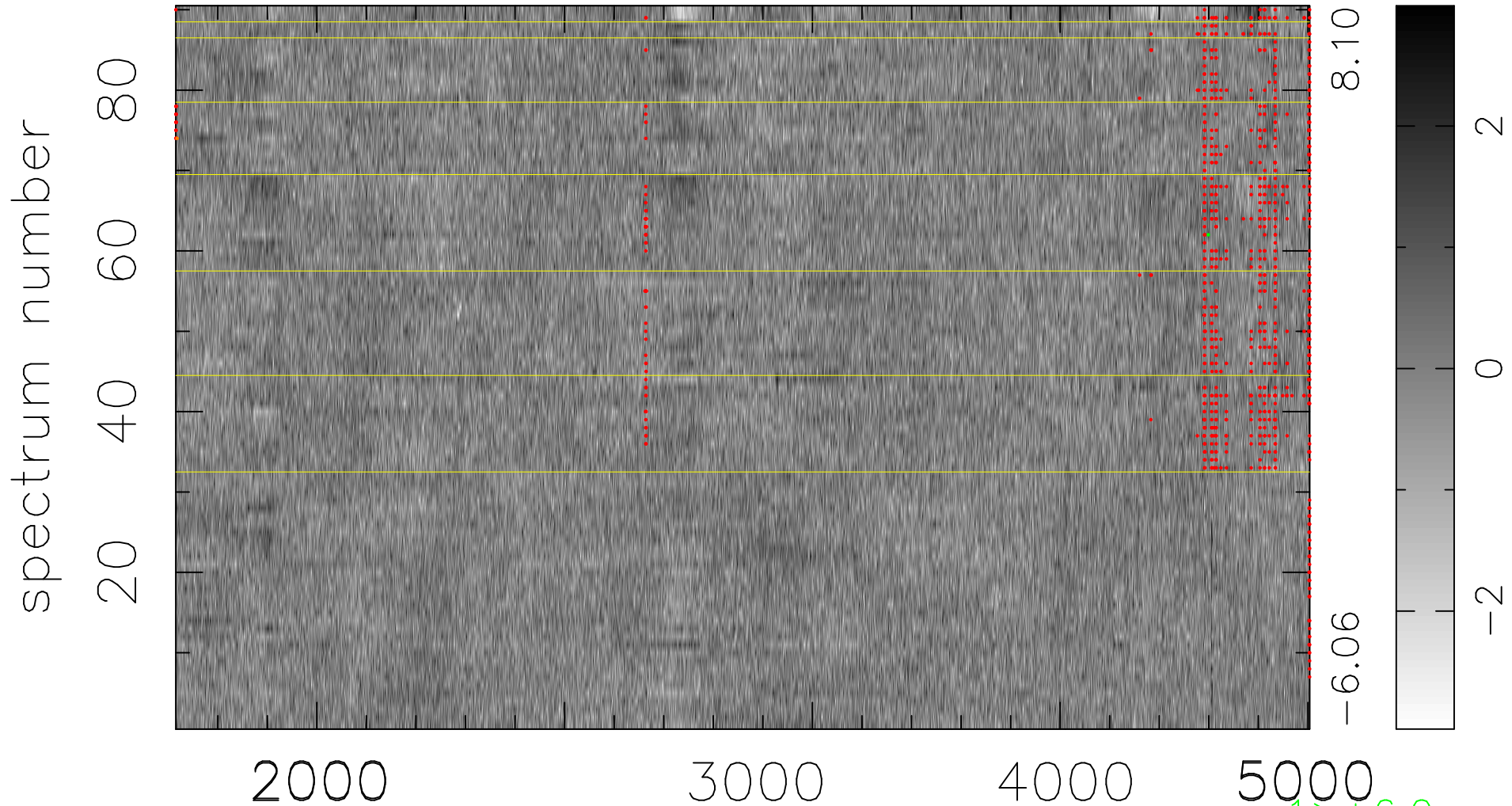


$$\chi(\lambda,t) = (\text{Data} - \text{Model } AC_5) / \sigma \chi$$

$$\chi^2 / (411930 - 4957) = 0.867 \Rightarrow 1.007$$

4577x90



bad:838=0.20%

λ (Å) $z = 1.05931$

$1 > +6.0\sigma$

$1 < -6.0\sigma$