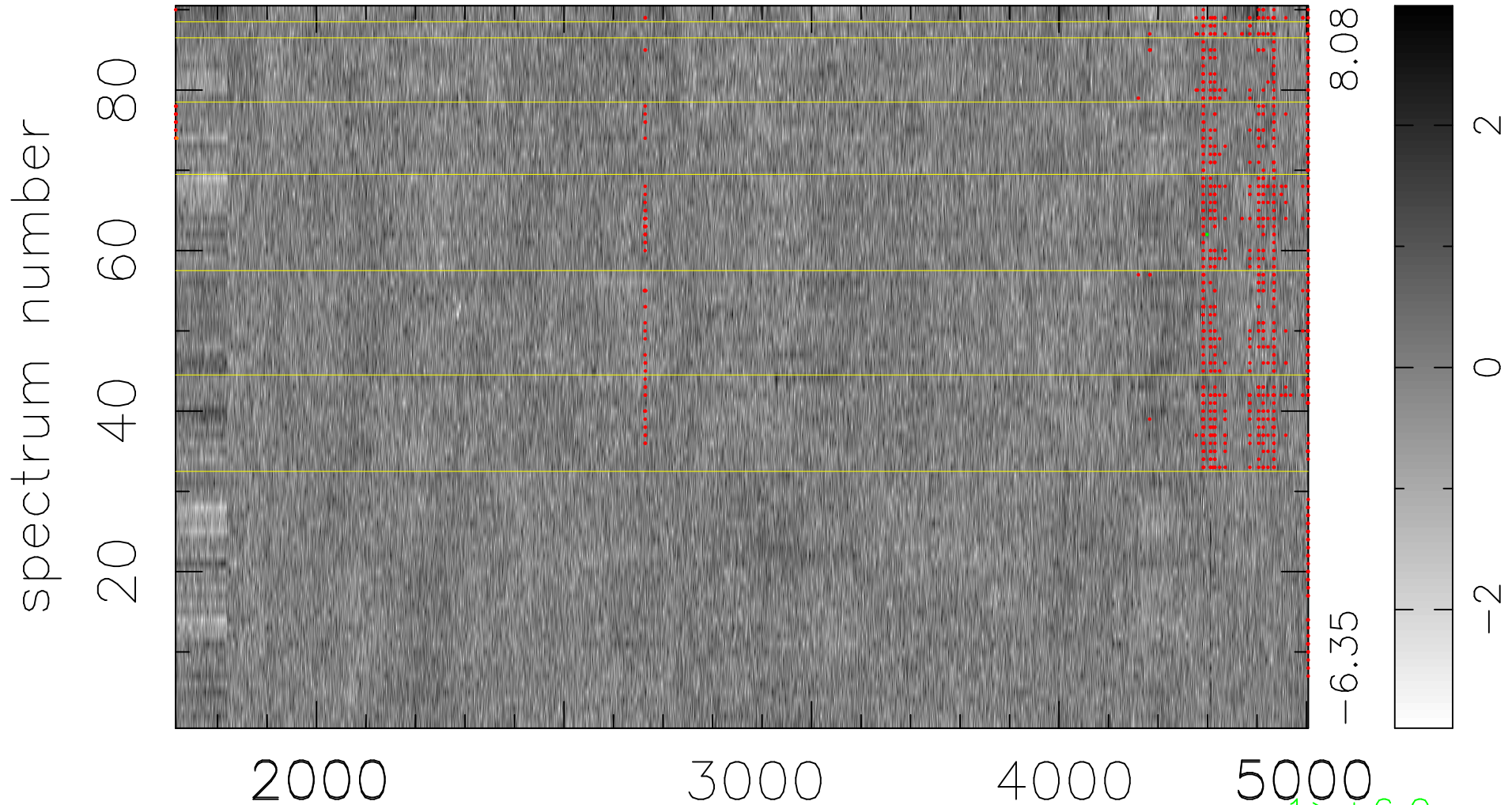


$$\chi(\lambda, t) = (\text{Data} - \text{Model } \text{AC}_5\text{B}_4\text{F}) / \sigma \chi$$

$$\chi^2 / (411930 - 5186) = 0.868 \Rightarrow 1.007$$

4577 × 90



bad:838=0.20%

λ (Å) $z = 1.05931$

$1 > +6.0\sigma$
 $1 < -6.0\sigma$