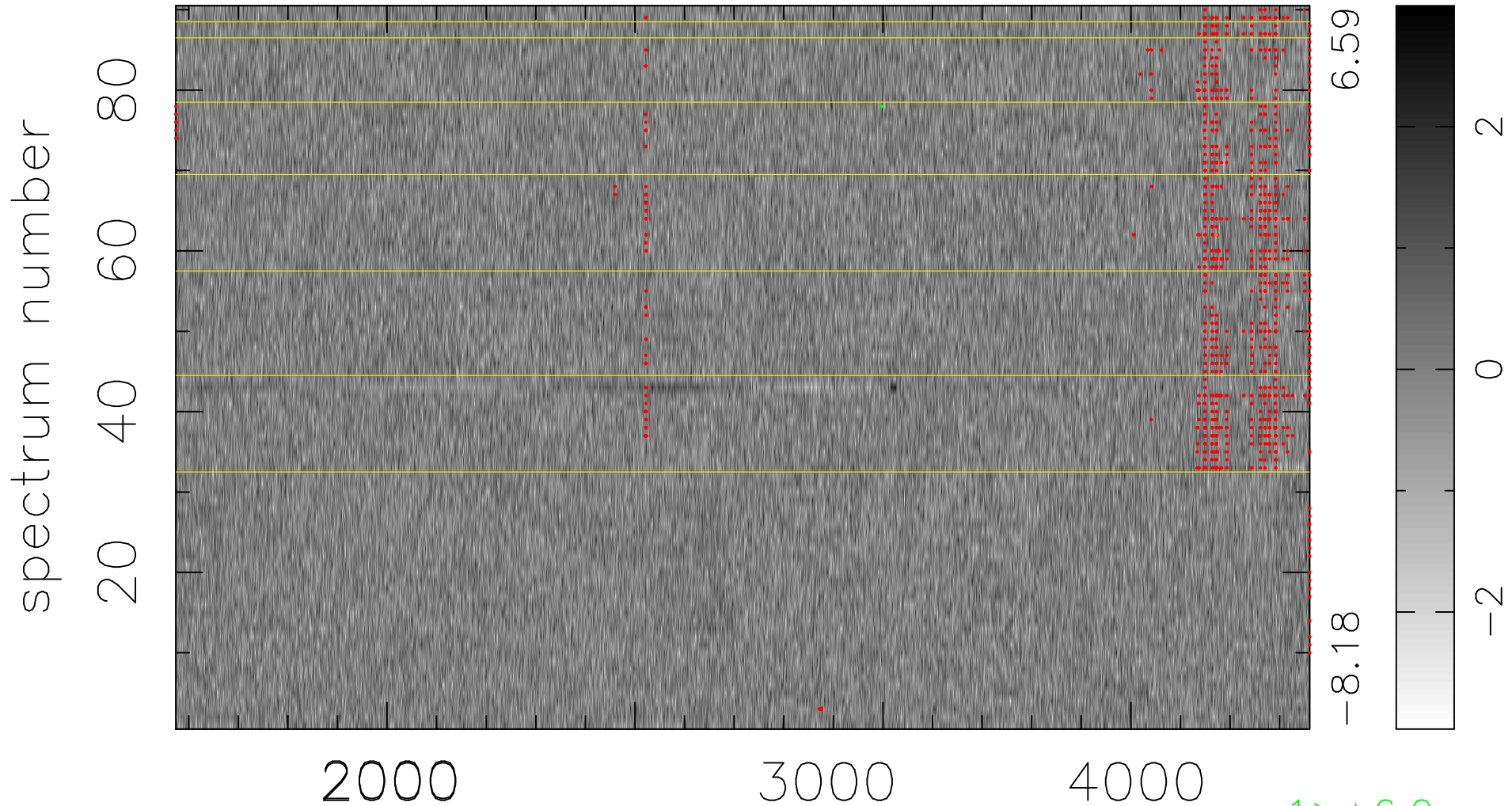


$$\chi(\lambda, t) = ( \text{Data} - \text{Model } \text{AC}_5\text{B}_4\text{F} ) / \sigma \chi$$

$$\chi^2 / (411660 - 5203) = 0.909 \Rightarrow 1.007$$

4574 × 90



bad:877=0.21%

$\lambda$  (Å)  $z = 1.19839$

1 > +6.0σ

1 < -6.0σ