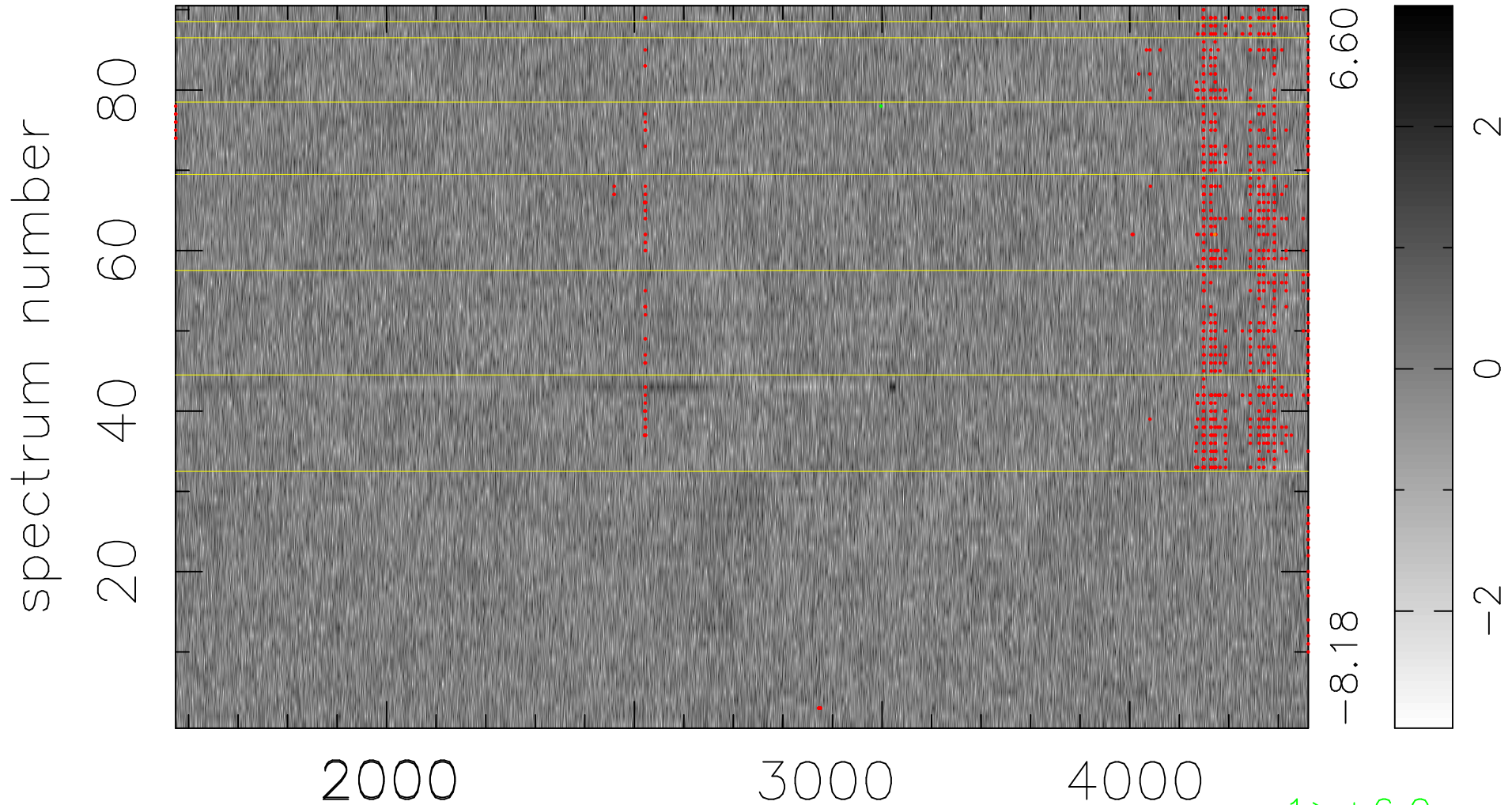


$$\chi(\lambda, t) = (\text{Data} - \text{Model AC}_5\text{F}) / \sigma \chi$$

$$\chi^2 / (411660 - 5041) = 0.910 \Rightarrow 1.007$$

4574x90



bad:877=0.21%

λ (Å) $z = 1.19839$

1 > +6.0σ

1 < -6.0σ