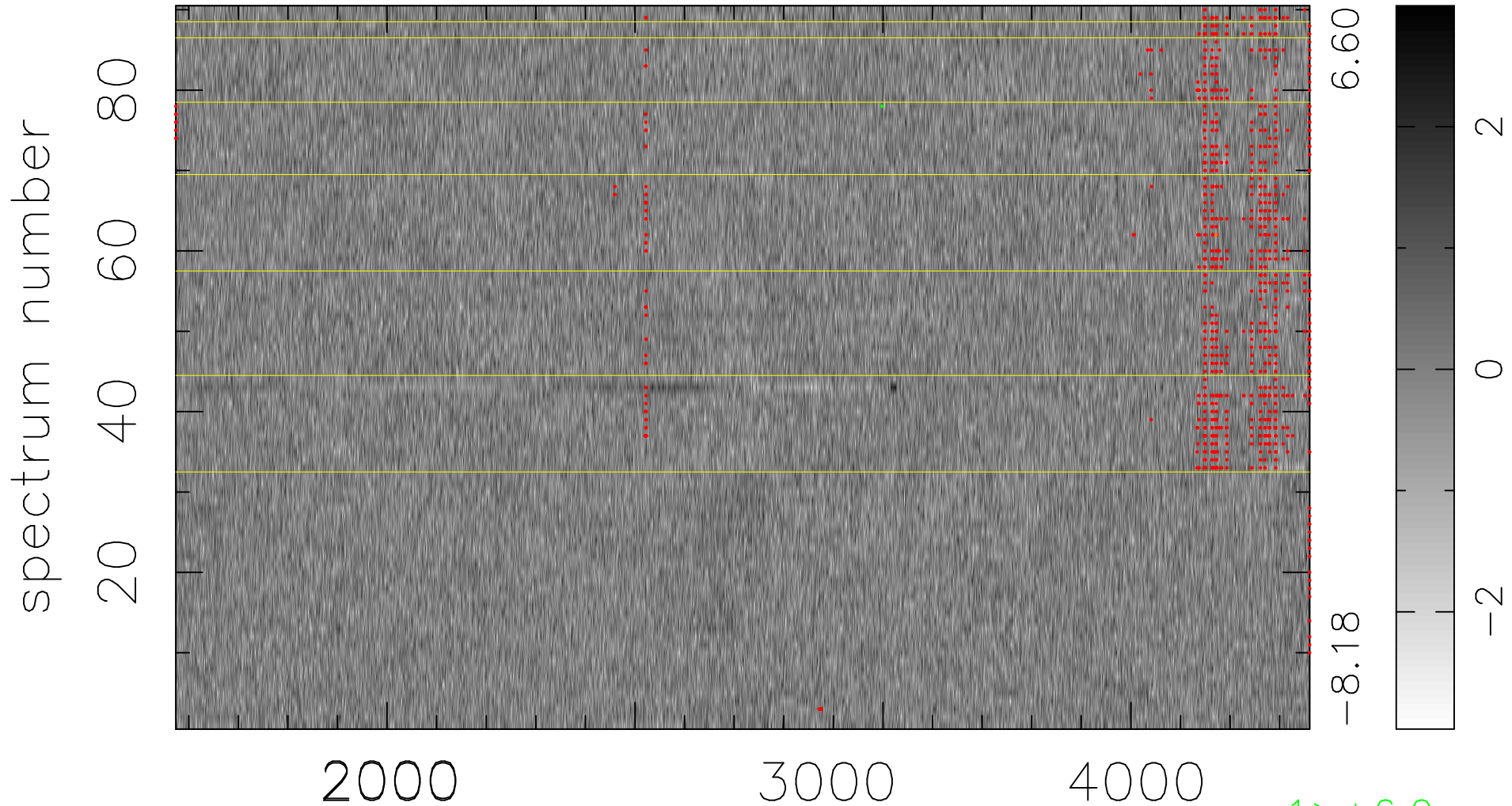


$$\chi(\lambda,t) = ( \text{Data} - \text{Model } AC_5 ) / \sigma \chi$$

$$\chi^2 / (411660 - 4951) = 0.910 \Rightarrow 1.007$$

4574x90



bad:877=0.21%

$\lambda$  (Å)  $z = 1.19839$

1 > +6.0σ

1 < -6.0σ