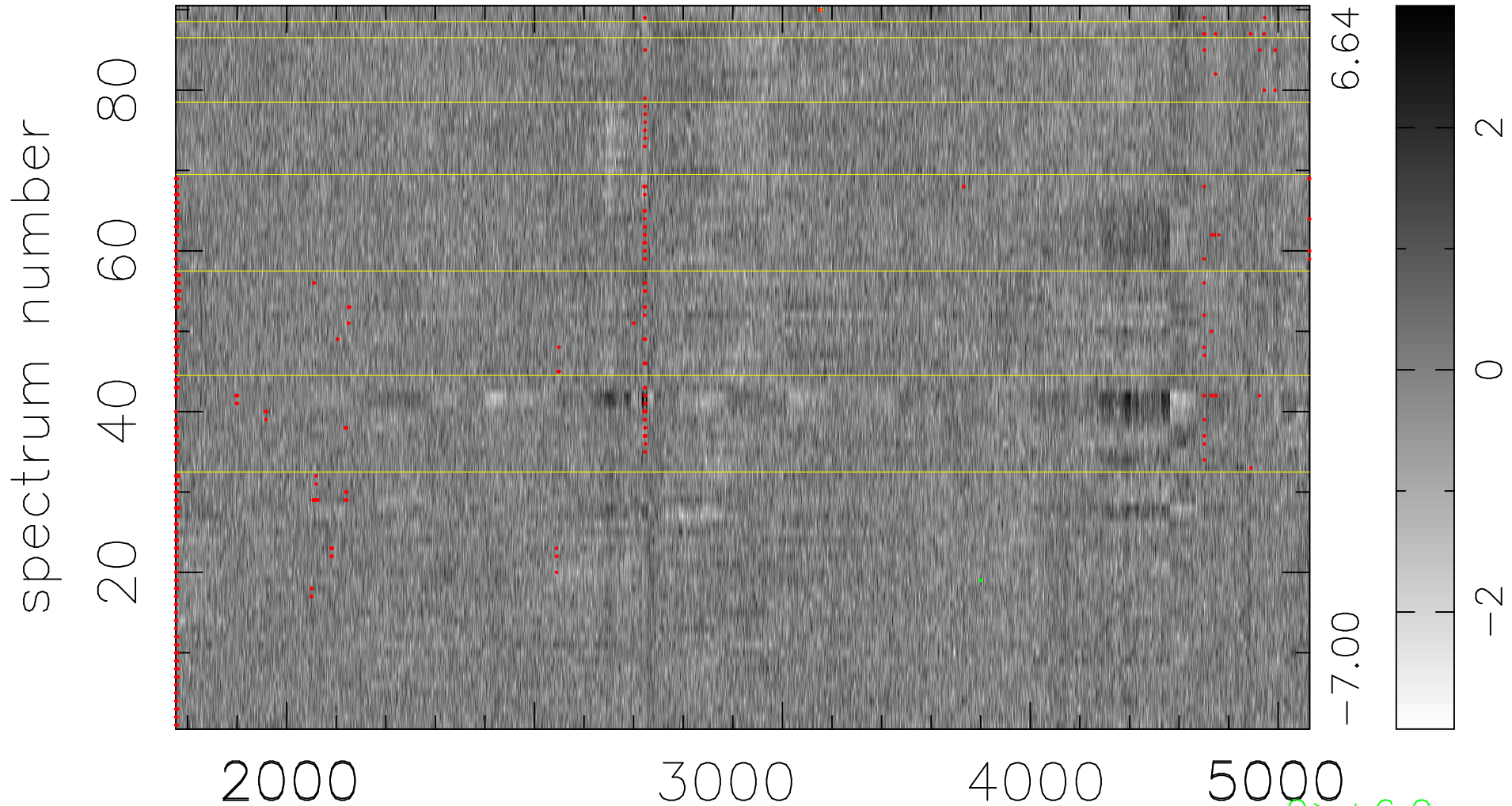


$$\chi(\lambda, t) = ( \text{Data} - \text{Model } \text{AC}_5\text{B}_4\text{F} ) / \sigma \chi$$

$$\chi^2 / (411750 - 5208) = 0.926 \Rightarrow 1.009$$

4575x90



bad:736=0.18%

$\lambda$  (Å)  $z = 1.00407$

2 > +6.0σ

1 < -6.0σ