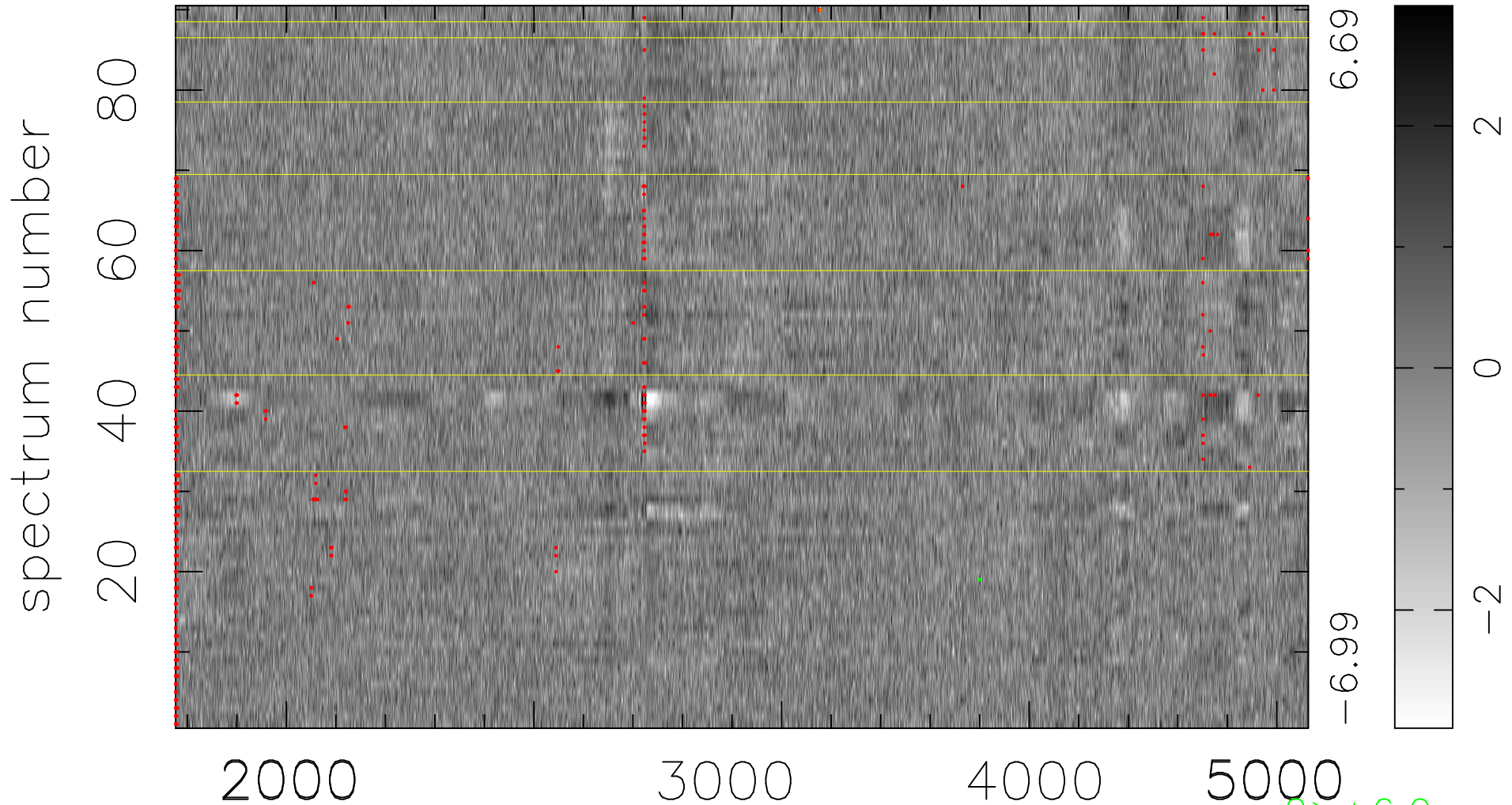


$$\chi(\lambda, t) = ( \text{Data} - \text{Model } AC_5 ) / \sigma \chi$$

$$\chi^2 / (411750 - 4958) = 0.948 \Rightarrow 1.008$$

4575x90



bad:736=0.18%

$\lambda$  (Å)  $z = 1.00407$

2 > +6.0σ

1 < -6.0σ