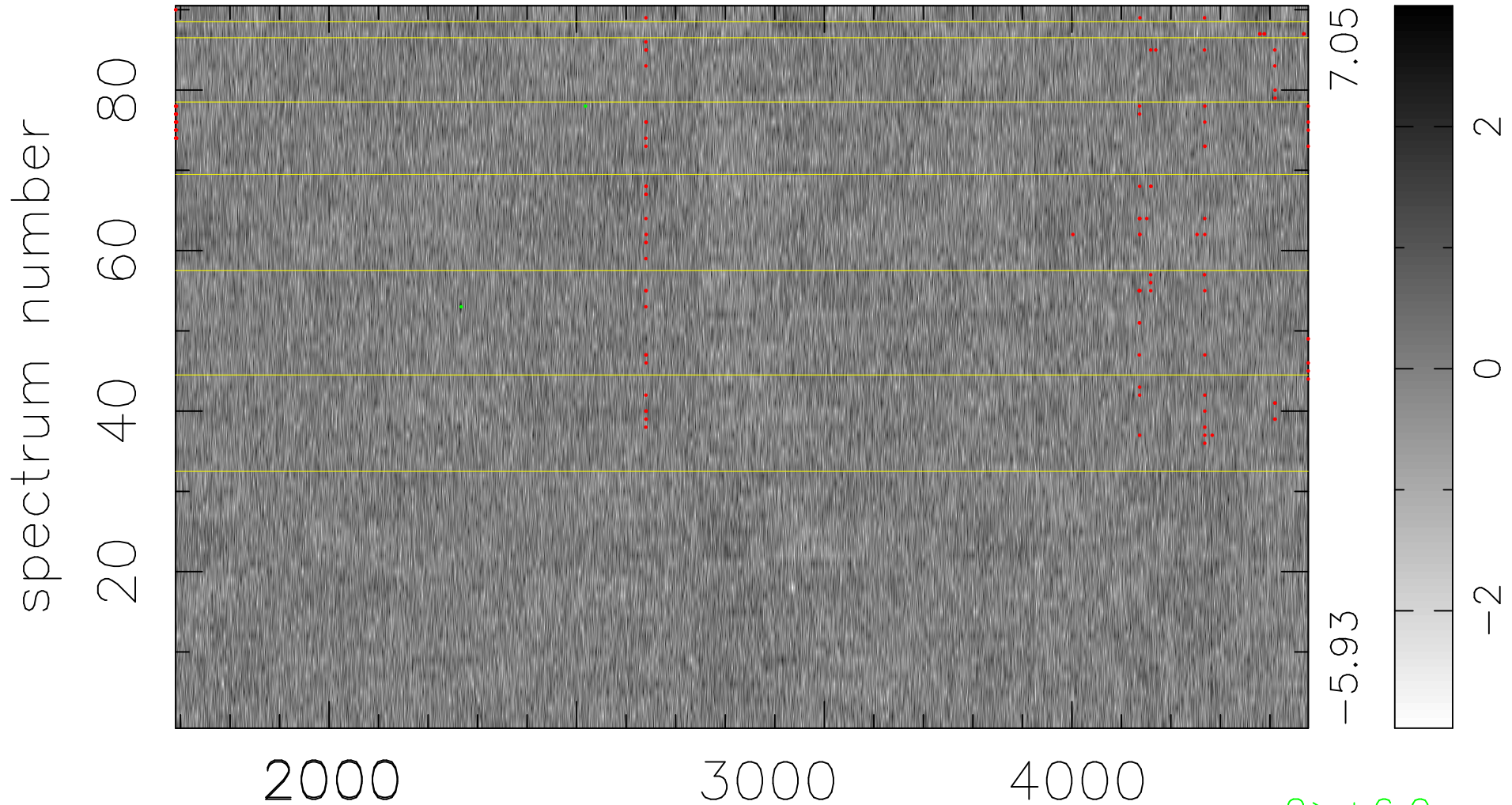


$$\chi(\lambda, t) = (\text{Data} - \text{Model } \text{AC}_5\text{B}_4\text{F}) / \sigma \chi$$

$$\chi^2 / (411750 - 5225) = 0.879 \Rightarrow 1.007$$

4575x90



bad:123=0.030% λ (Å) $z = 1.08236$

2 > +6.0 σ