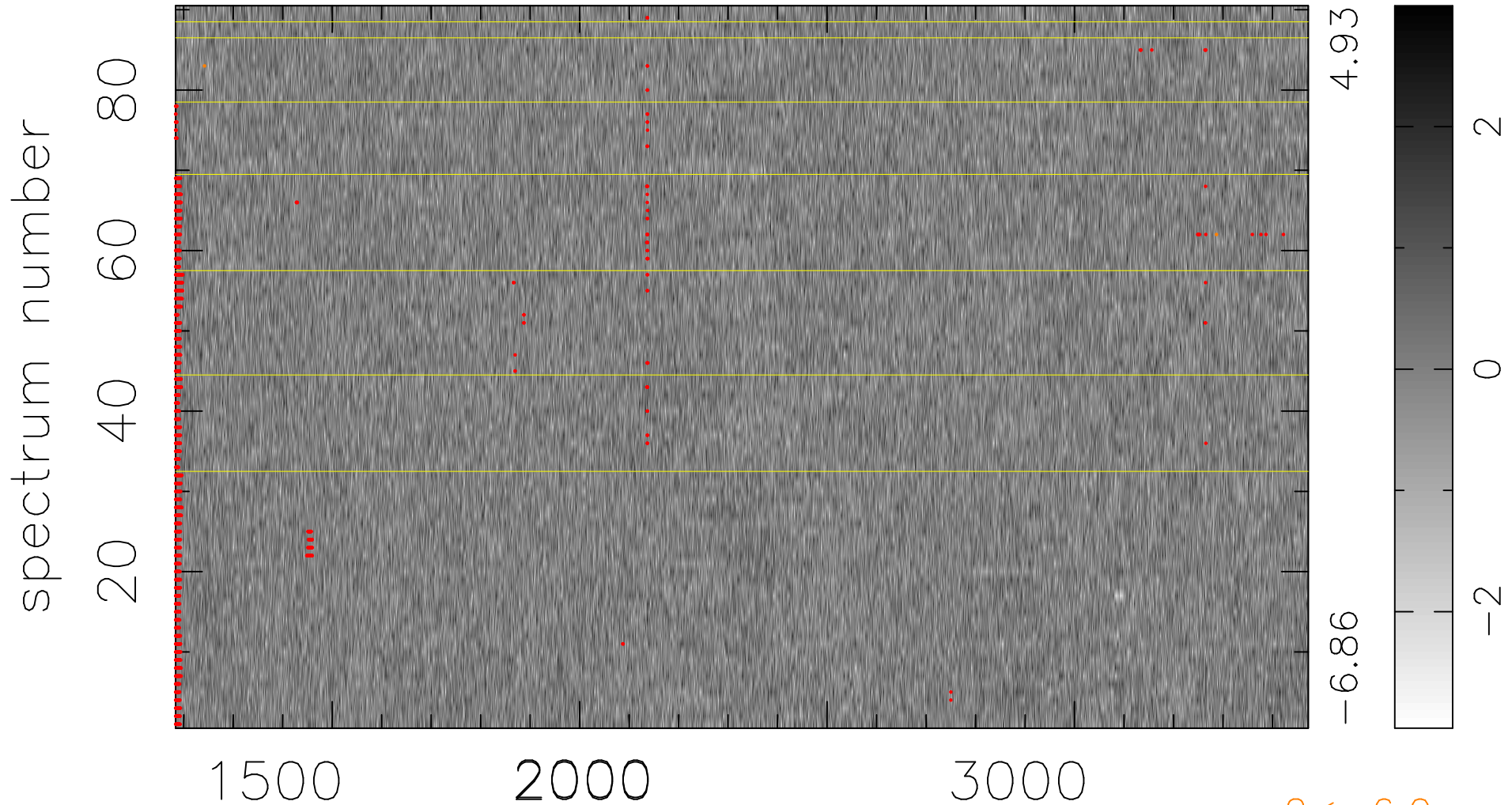


$$\chi(\lambda, t) = ( \text{Data} - \text{Model } \text{AC}_5\text{B}_5\text{F} ) / \sigma \chi$$

$$\chi^2 / (412020 - 5303) = 0.938 \Rightarrow 1.007$$

4578x90



bad:1555=0.38%  $\lambda$  (Å)  $z = 1.62519$

$2 < -6.0\sigma$