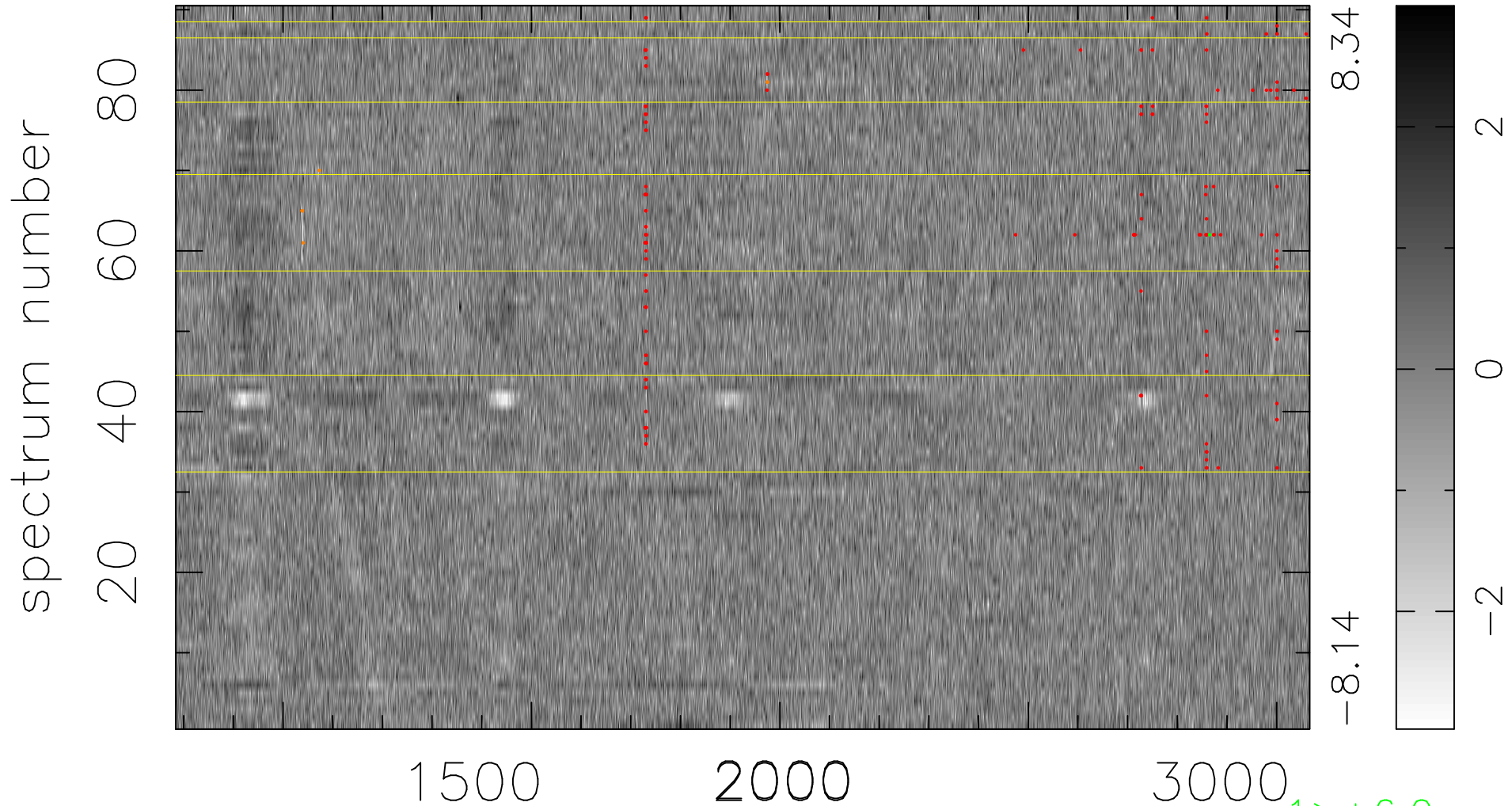


$$\chi(\lambda,t) = (\text{Data} - \text{Model } AC_5) / \sigma \chi$$

$$\chi^2 / (410850 - 5234) = 0.951 \Rightarrow 1.007$$

4565x90



bad:162=0.039% λ (Å) $z = 2.16548$

1 > +6.0 σ

7 < -6.0 σ