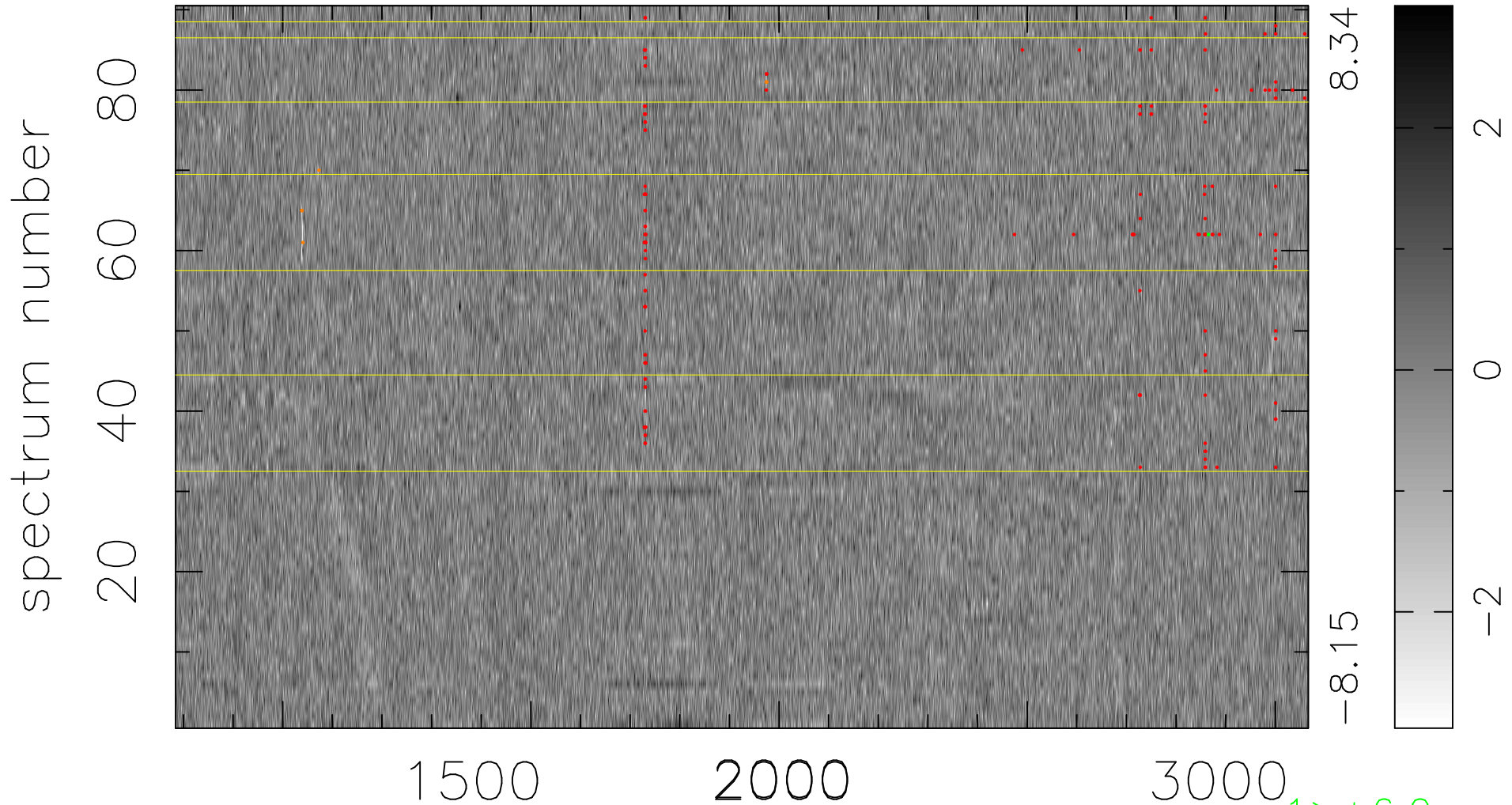


$$\chi(\lambda, t) = (\text{Data} - \text{Model } \text{AC}_5\text{B}_7\text{F}) / \sigma \chi$$

$$\chi^2 / (410850 - 5495) = 0.926 \Rightarrow 1.008$$

4565x90



8.34

-8.15

2

0

-2

1 > +6.0σ

7 < -6.0σ

bad:162=0.039% λ (Å) z = 2.16548