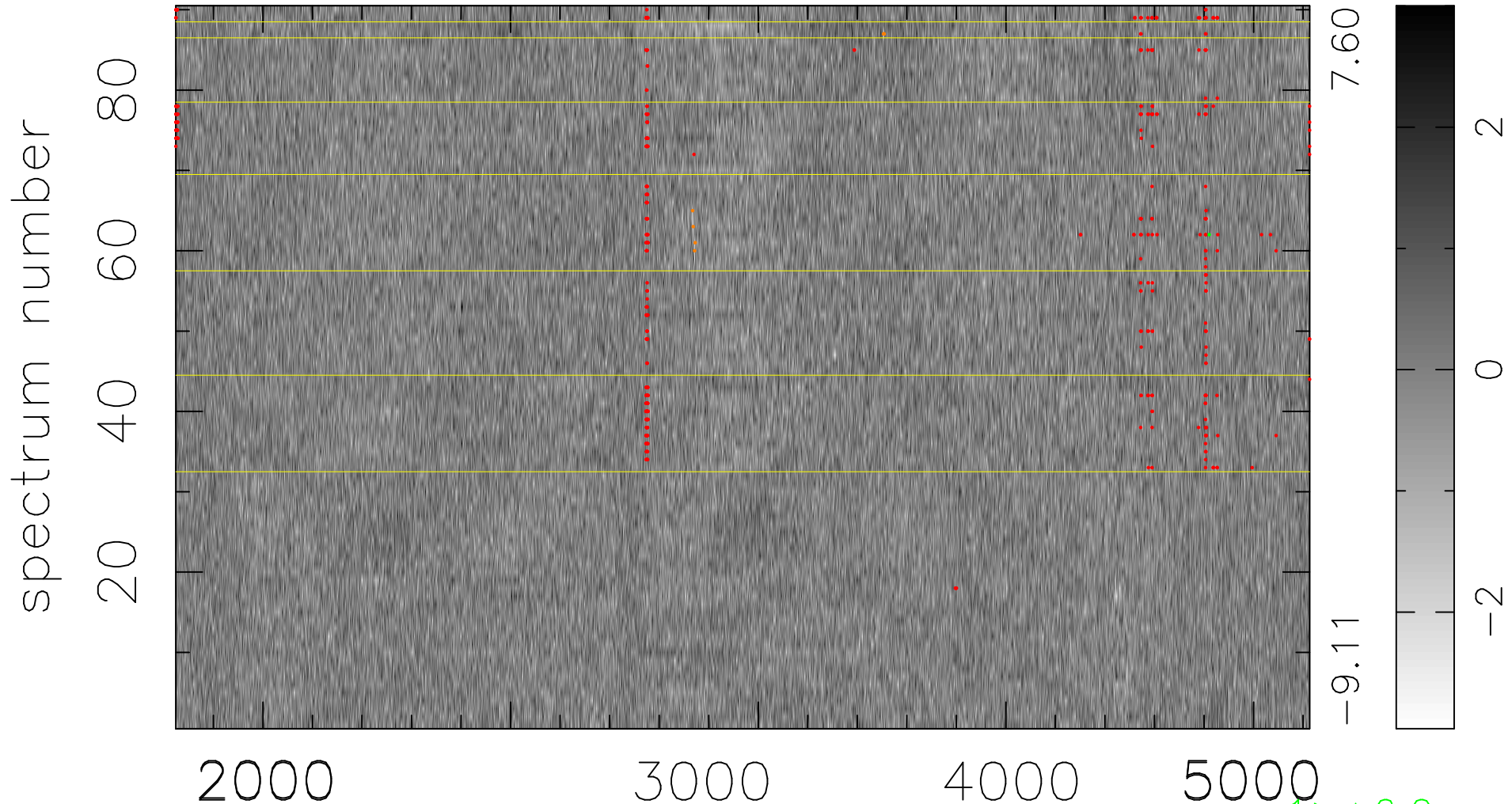


$$\chi(\lambda, t) = ( \text{Data} - \text{Model } \text{AC}_5\text{B}_4\text{F} ) / \sigma \chi$$

$$\chi^2 / (412110 - 5177) = 0.991 \Rightarrow 1.007$$

4579x90



bad:443=0.11%

$\lambda$  (Å)  $z = 0.95601$

$\uparrow > +6.0\sigma$

$\uparrow < -6.0\sigma$