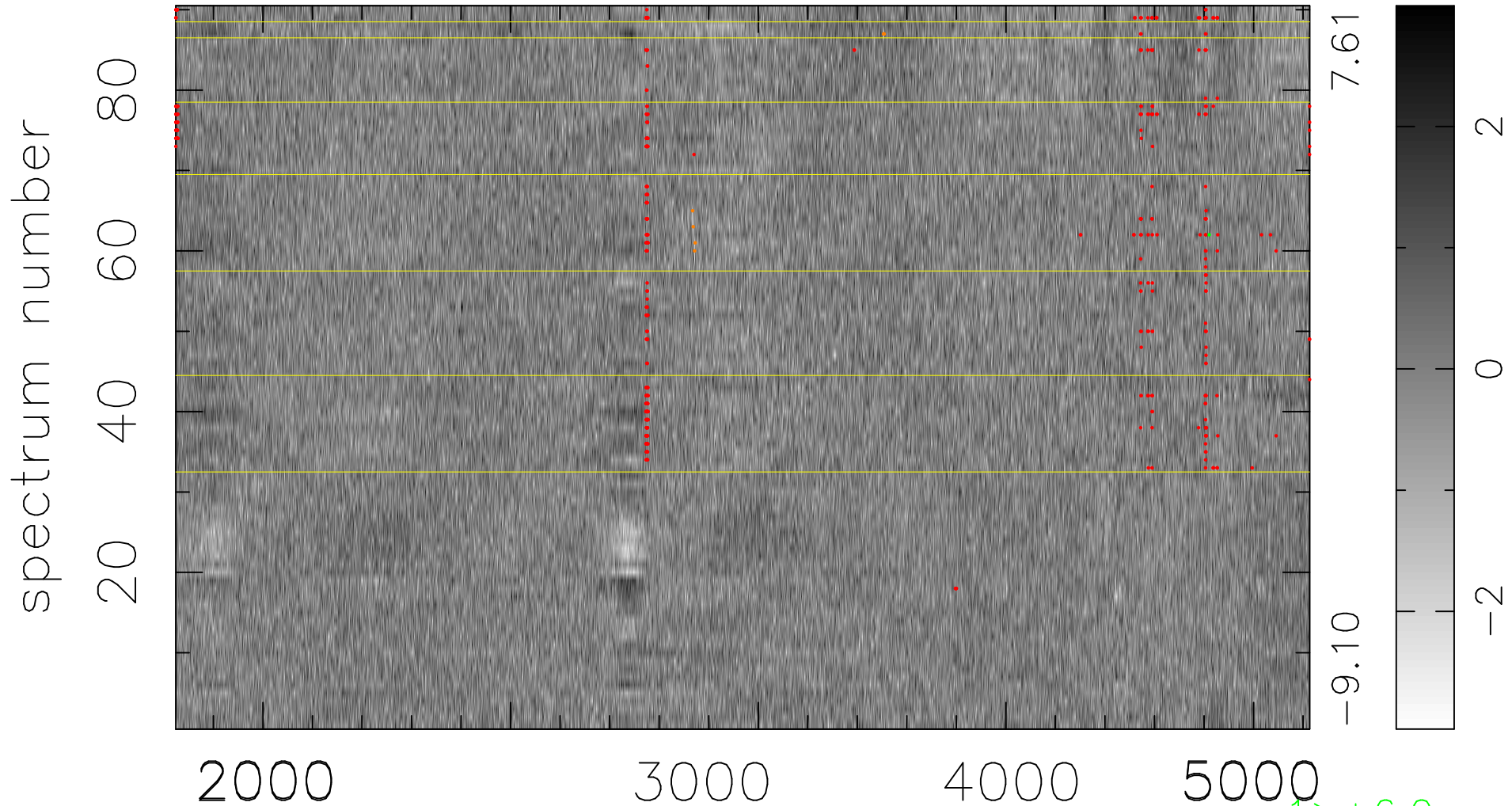


$$\chi(\lambda, t) = ( \text{Data} - \text{Model AC}_5\text{F} ) / \sigma \chi$$

$$\chi^2 / (412110 - 5057) = 1.010 \Rightarrow 1.007$$

4579x90



7.61

-9.10

2

0

-2

$\uparrow > +6.0\sigma$

$\downarrow < -6.0\sigma$

bad:443=0.11%

$\lambda$  (Å)  $z = 0.95601$