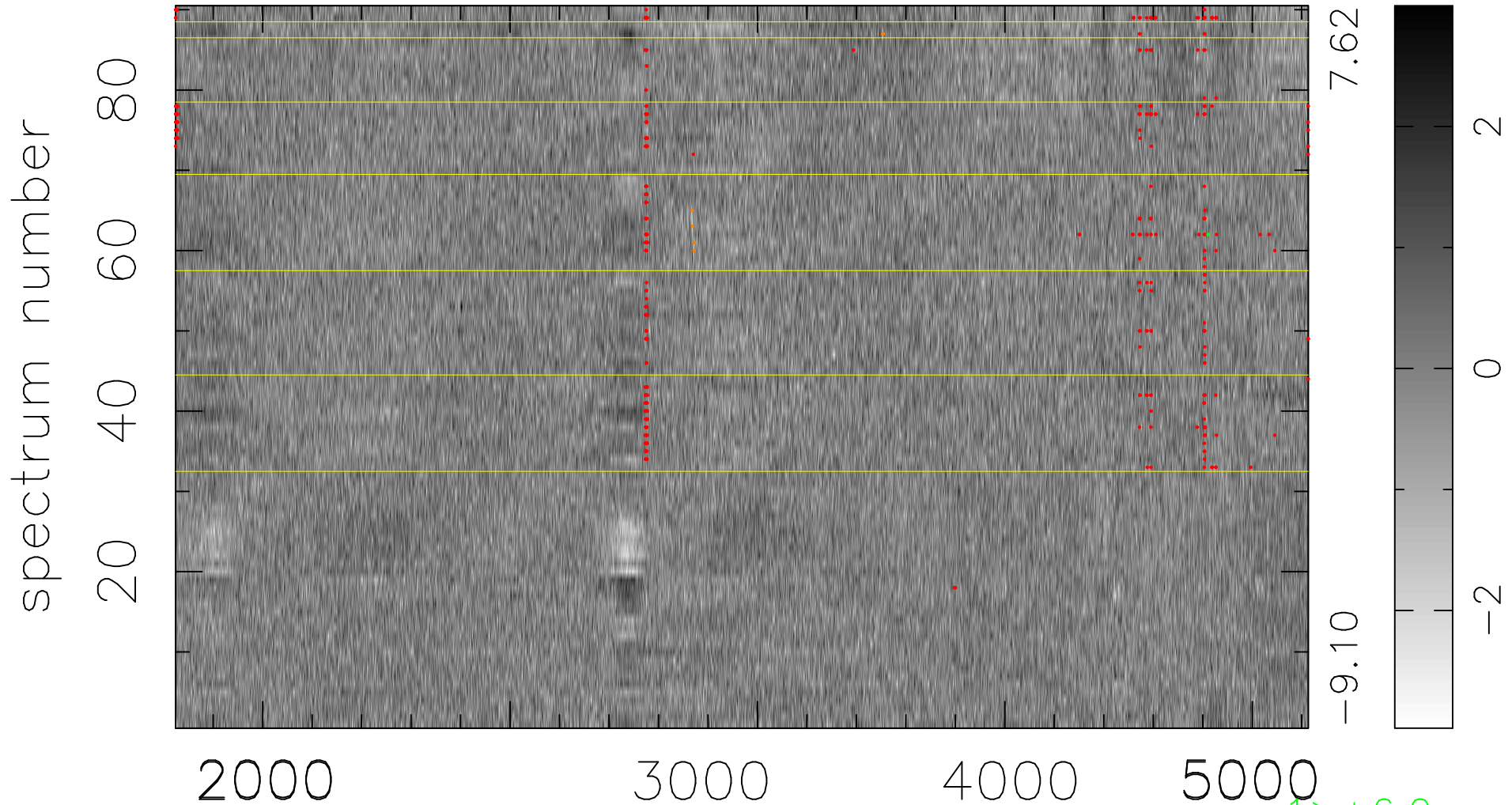


$$\chi(\lambda, t) = (\text{Data} - \text{Model } AC_5) / \sigma \chi$$

$$\chi^2 / (412110 - 4967) = 1.014 \Rightarrow 1.007$$

4579x90



bad:443=0.11%

λ (Å) $z = 0.95601$

$\uparrow > +6.0\sigma$

$\uparrow < -6.0\sigma$