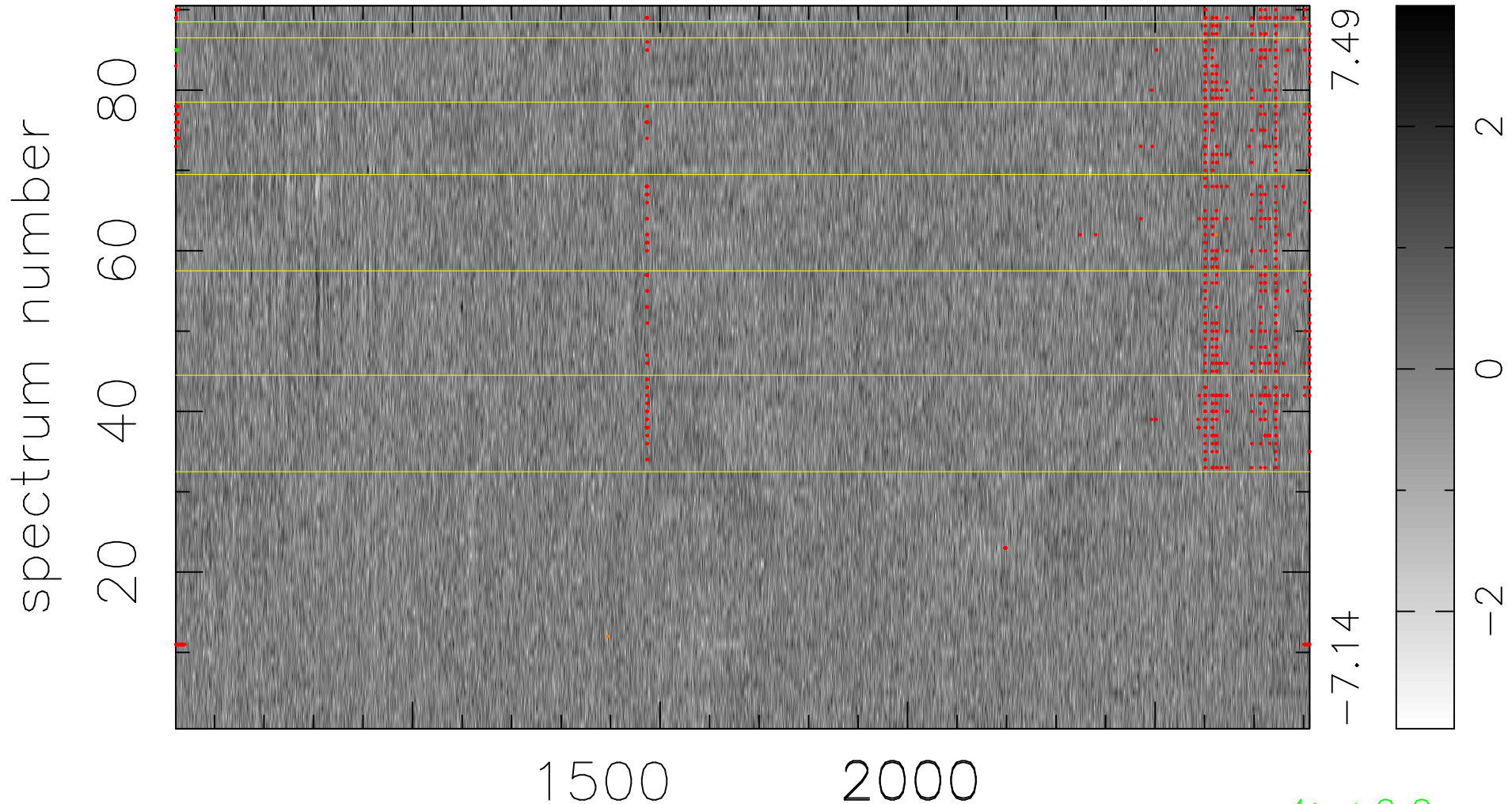


$$\chi(\lambda, t) = (\text{Data} - \text{Model } \text{AC}_5\text{B}_7\text{F}) / \sigma \chi$$

$$\chi^2 / (412380 - 5482) = 0.895 \Rightarrow 1.007$$

4582x90



bad:786=0.19%

λ (Å) $z = 2.56253$

4 > +6.0 σ

5 < -6.0 σ