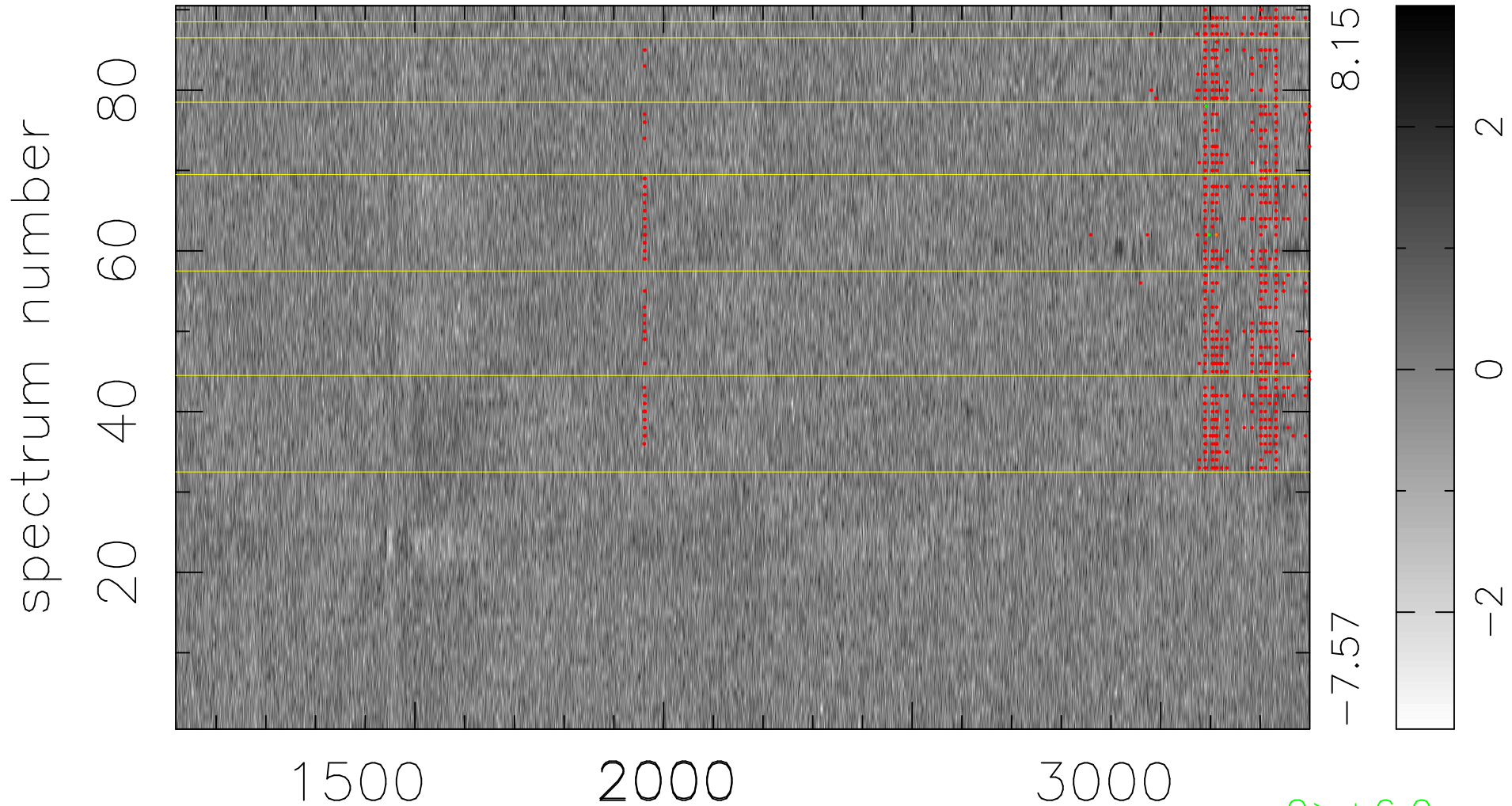


$$\chi(\lambda, t) = (\text{Data} - \text{Model } \text{AC}_5\text{B}_5\text{F}) / \sigma \chi$$

$$\chi^2 / (410580 - 5277) = 0.916 \Rightarrow 1.007$$

4562x90



bad:759=0.18%

λ (Å) $z = 1.84509$

2 > +6.0 σ

1 < -6.0 σ