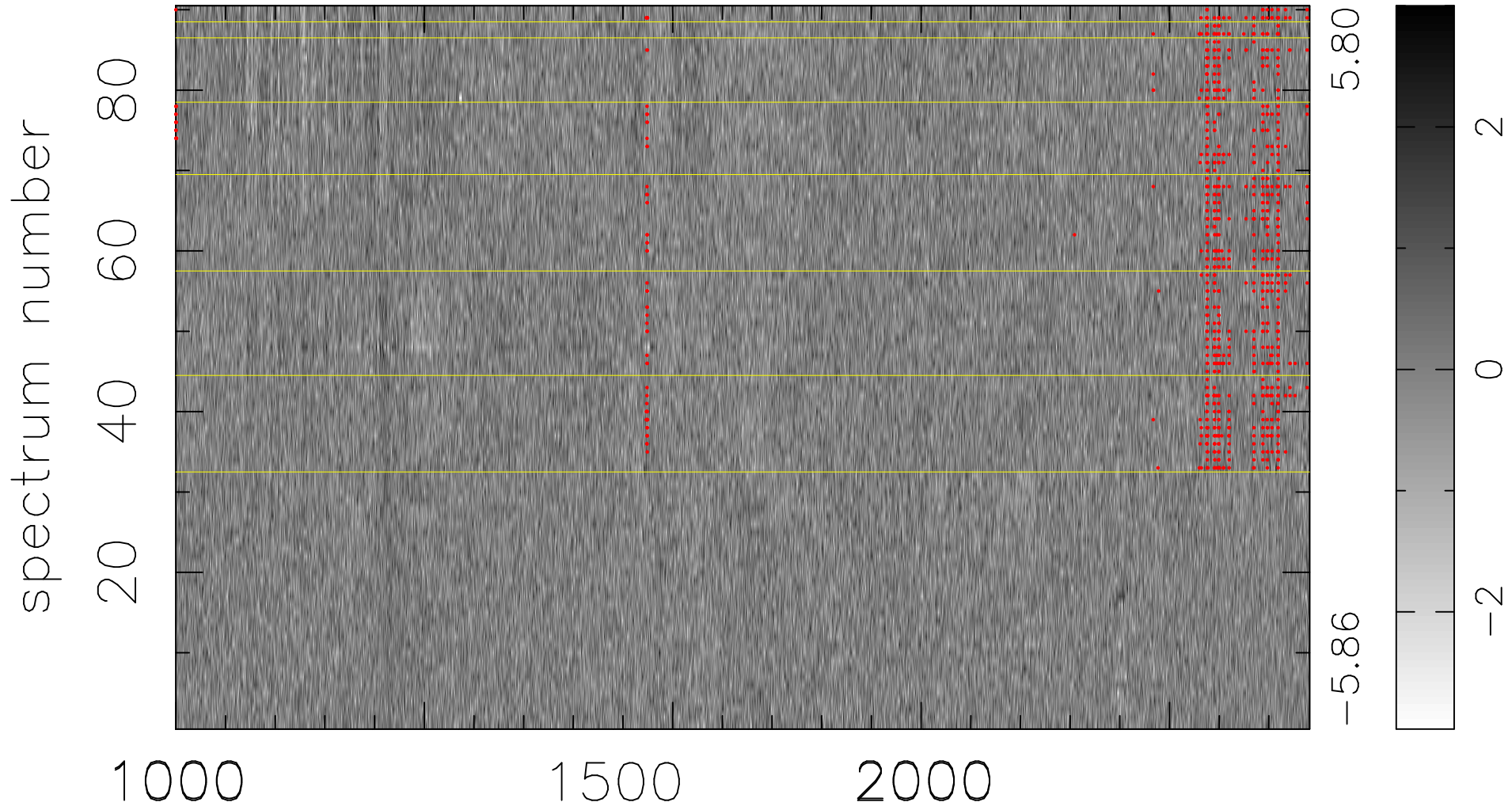


$$\chi(\lambda, t) = (\text{Data} - \text{Model } \text{AC}_5\text{B}_7\text{F}) / \sigma \chi$$

$$\chi^2 / (410850 - 5466) = 0.950 \Rightarrow 1.008$$

4565x90



bad:791=0.19%

λ (Å) $z = 2.60422$