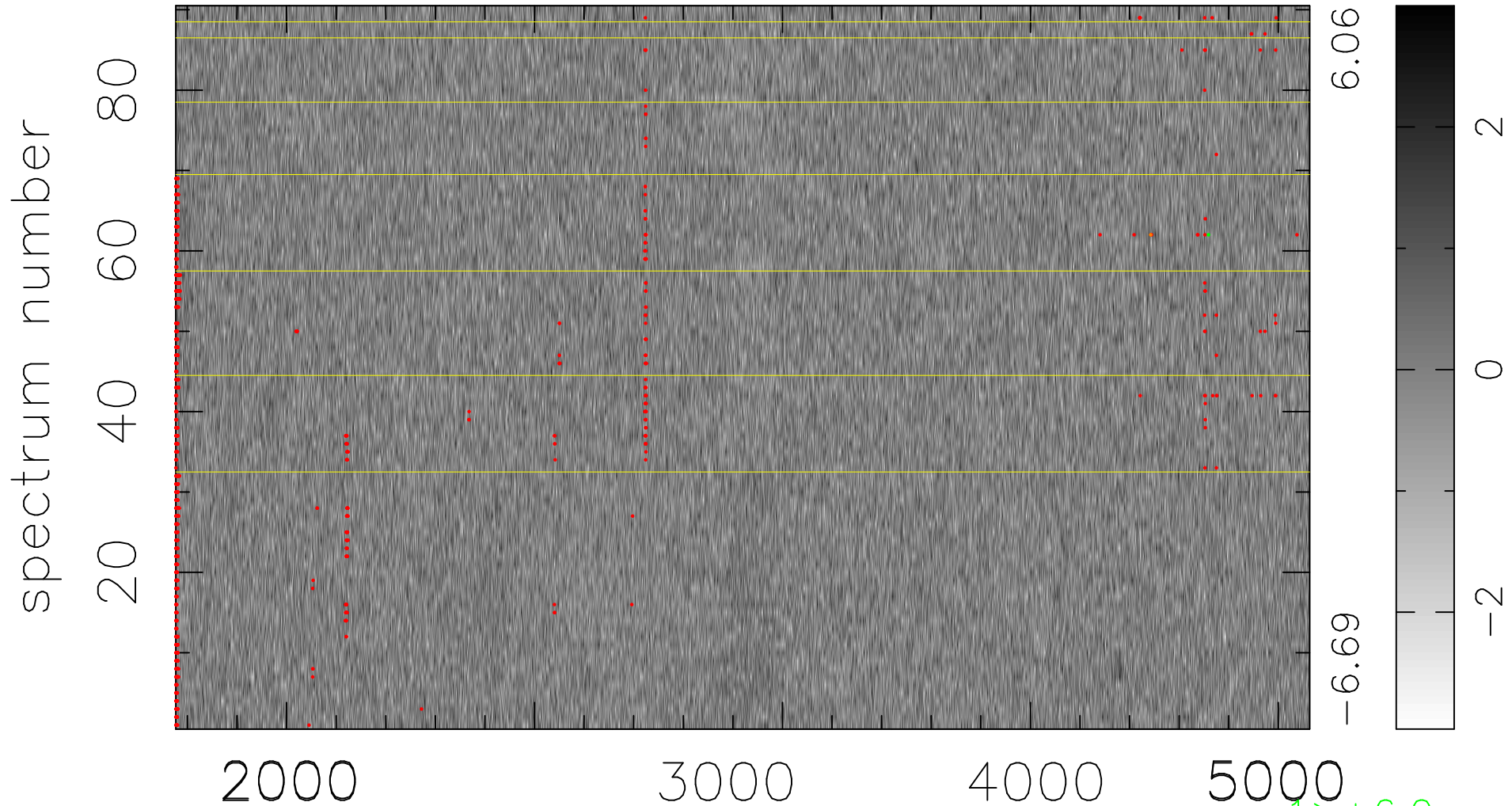


$$\chi(\lambda, t) = (\text{Data} - \text{Model } \text{AC}_5\text{B}_4\text{F}) / \sigma \chi$$

$$\chi^2 / (411660 - 5229) = 0.977 \Rightarrow 1.007$$

4574x90



bad:870=0.21%

λ (Å) $z = 1.00299$

$1 > +6.0\sigma$

$1 < -6.0\sigma$