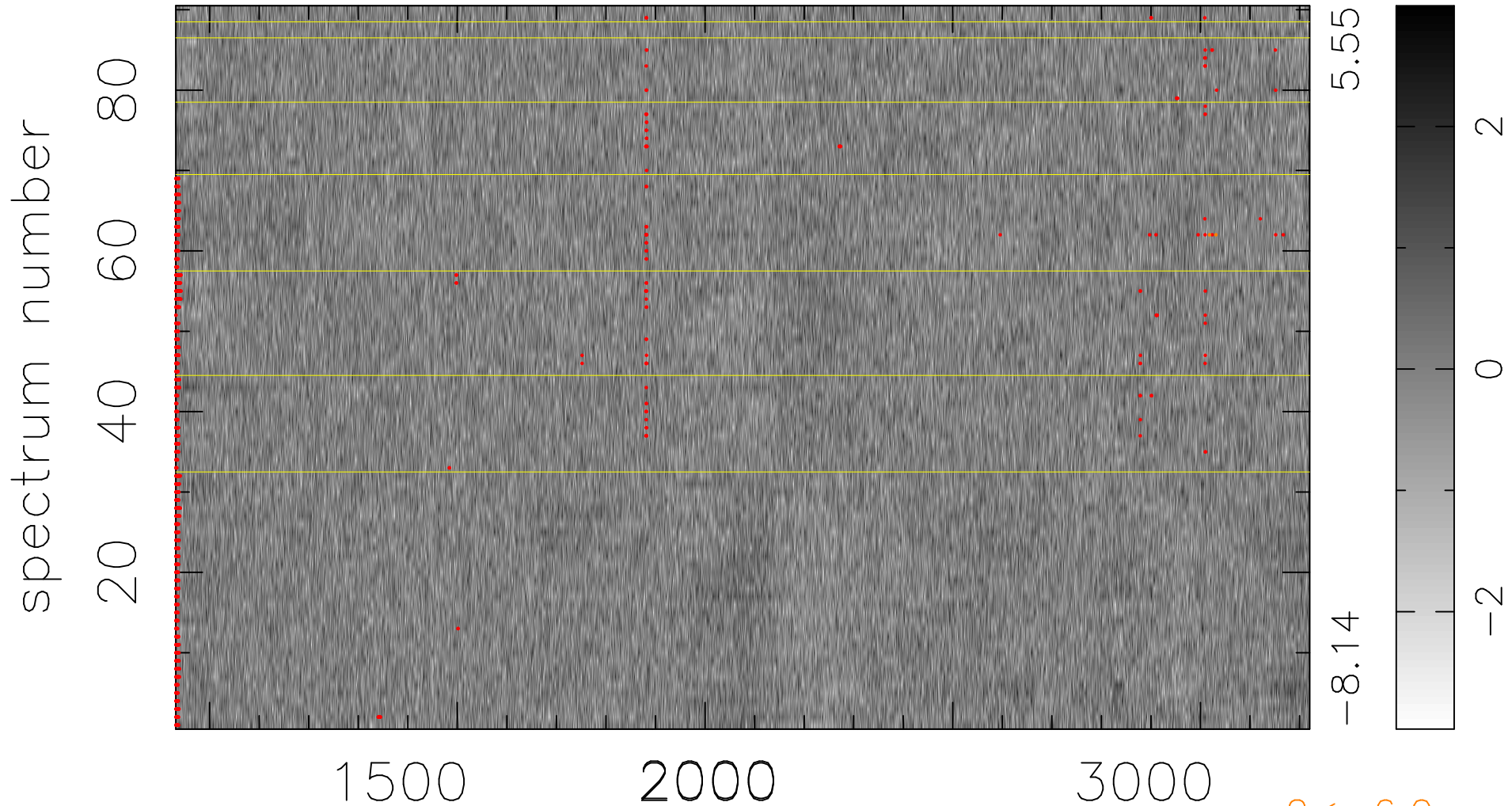


$$\chi(\lambda, t) = (\text{Data} - \text{Model } \text{AC}_5\text{B}_6\text{F}) / \sigma \chi$$

$$\chi^2 / (412020 - 5397) = 0.885 \Rightarrow 1.007$$

4578x90



bad:1024=0.25% λ (Å) $z = 1.95289$