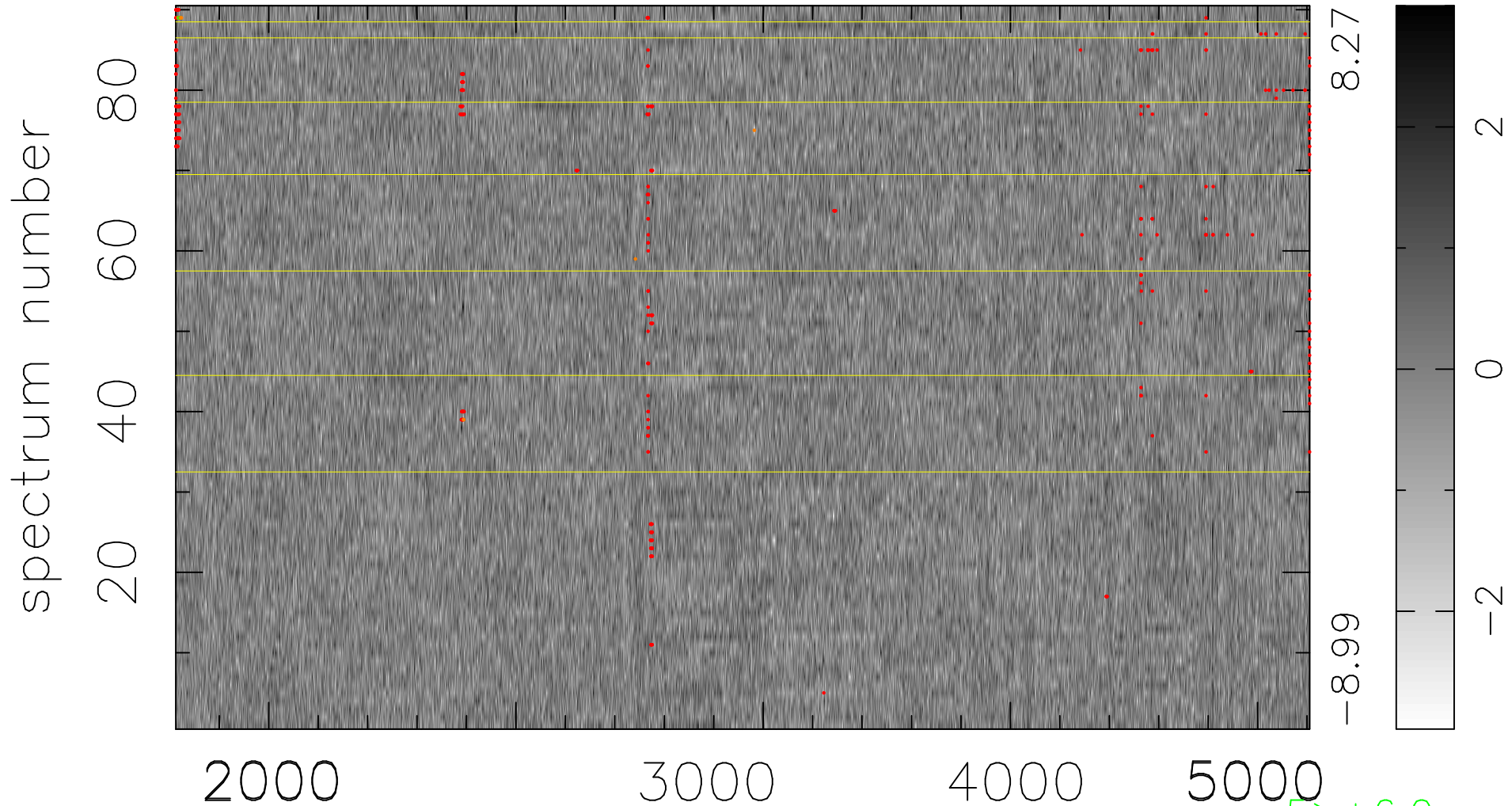


$$\chi(\lambda, t) = ( \text{Data} - \text{Model } \text{AC}_5\text{B}_4\text{F} ) / \sigma \chi$$

$$\chi^2 / (412830 - 5221) = 0.904 \Rightarrow 1.008$$

4587 × 90



bad:446=0.11%

$\lambda$  (Å)  $z = 0.96368$

5 > +6.0 $\sigma$

10 < -6.0 $\sigma$