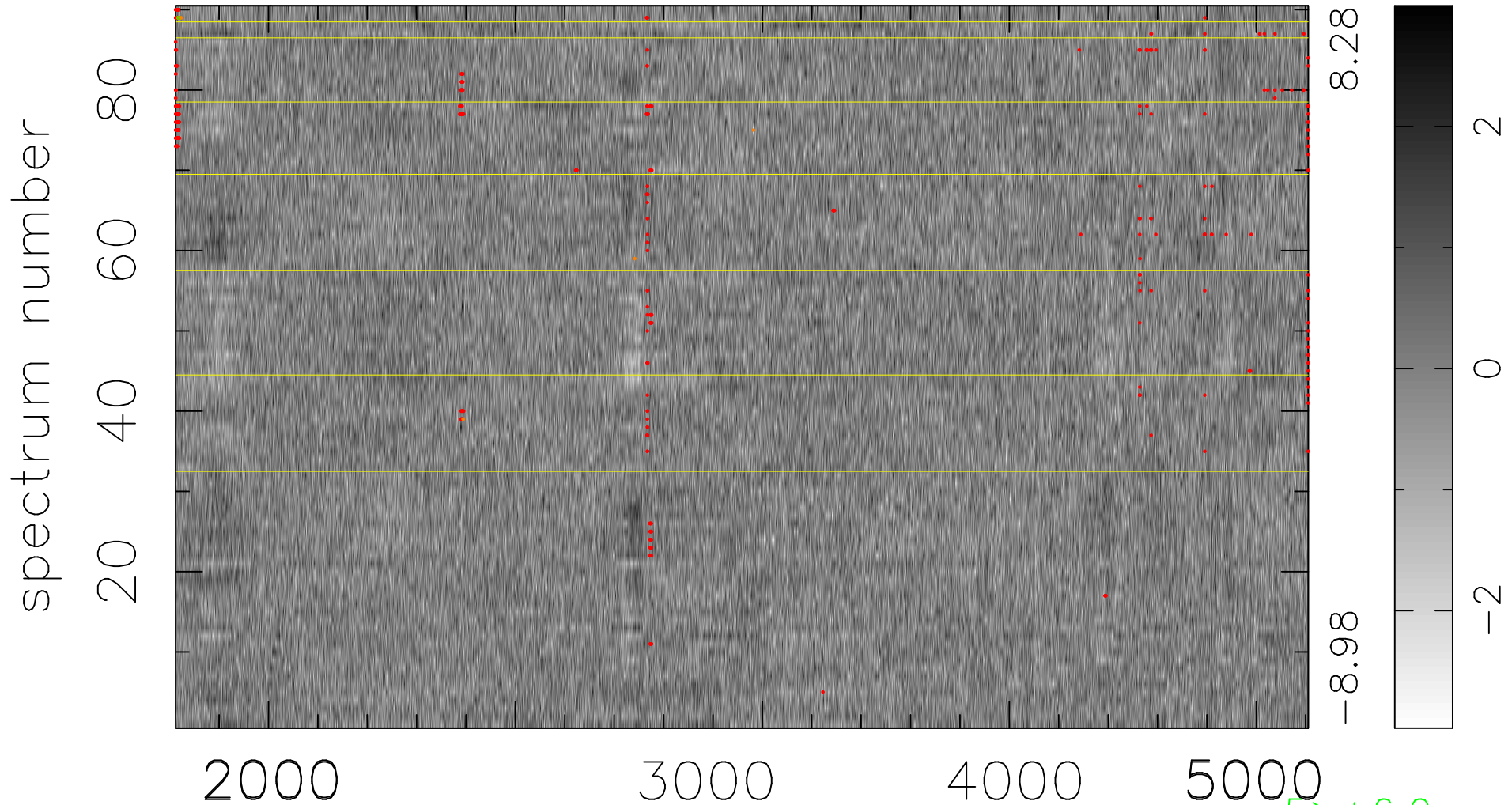


$$\chi(\lambda, t) = ( \text{Data} - \text{Model AC}_5\text{F} ) / \sigma \chi$$

$$\chi^2 / (412830 - 5059) = 0.918 \Rightarrow 1.007$$

4587 × 90



bad:446=0.11%

$\lambda$  (Å)  $z = 0.96368$

5 > +6.0σ  
10 < -6.0σ