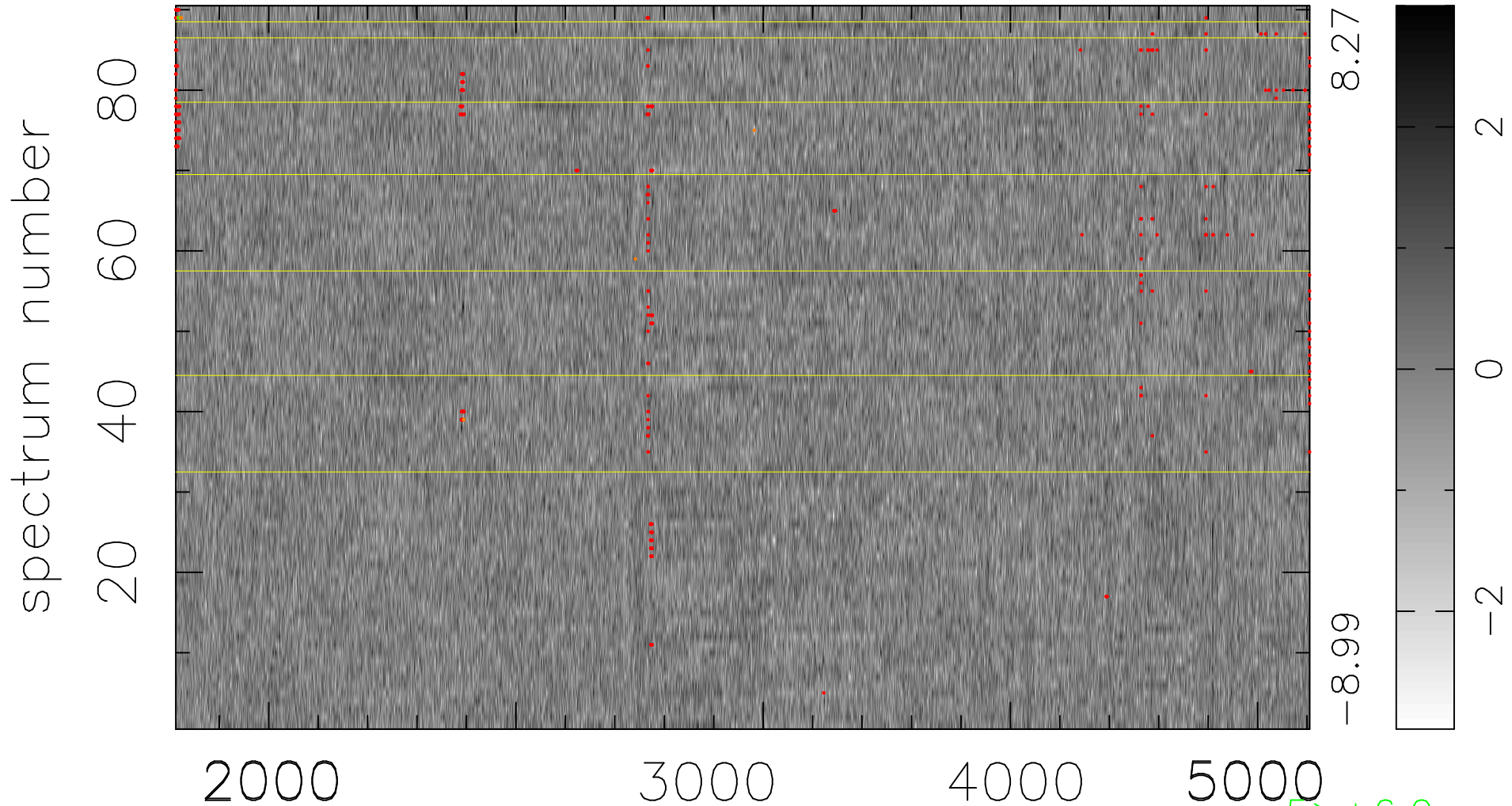


$$\chi(\lambda, t) = (\text{Data} - \text{Model } AC_5B_4F) / \sigma \chi$$

$$\chi^2 / (412830 - 5221) = 0.904 \Rightarrow 1.008$$

4587 × 90



bad:446=0.11%

λ (Å) $z = 0.96368$

5 > +6.0σ
10 < -6.0σ