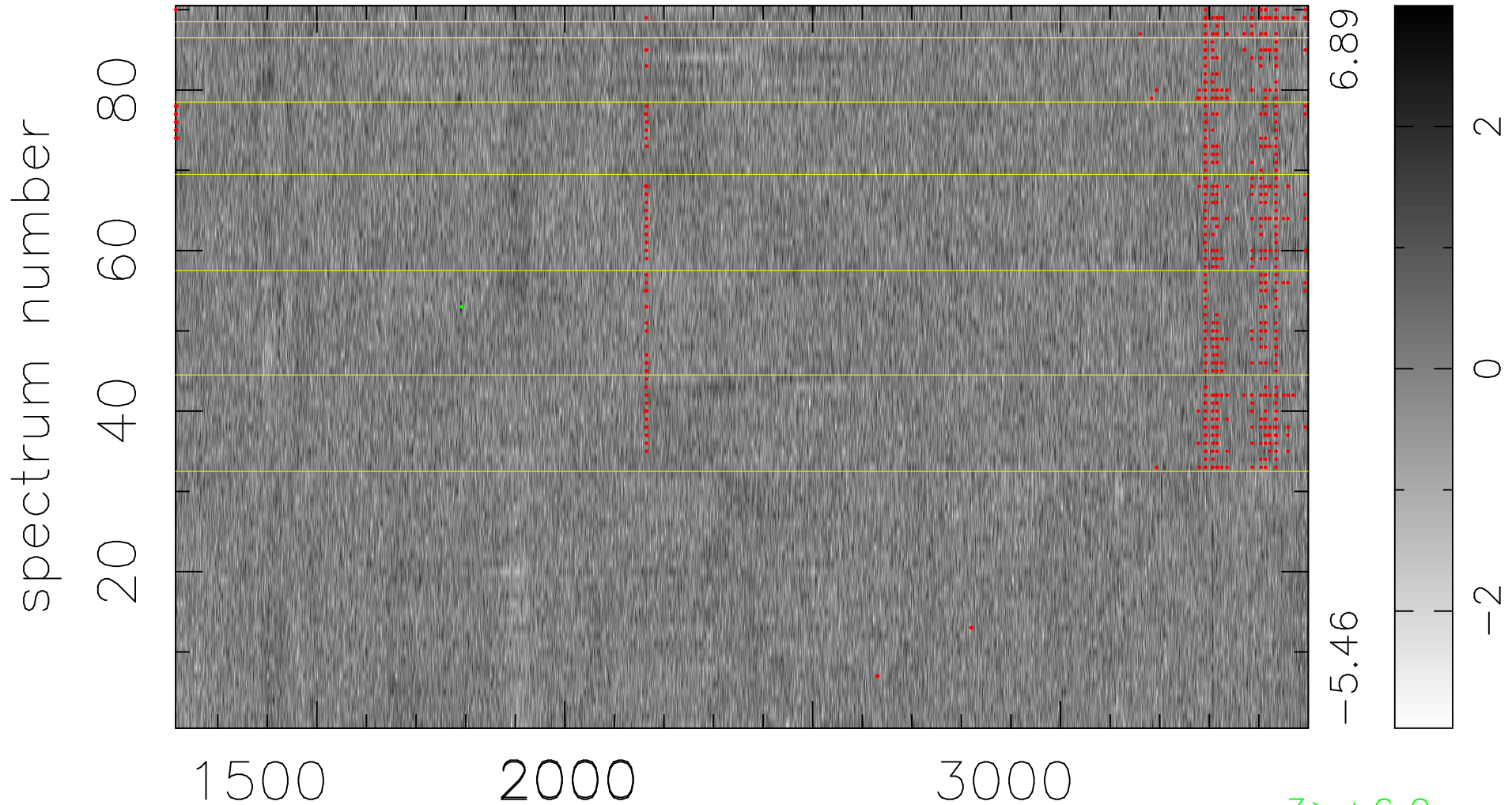


$$\chi(\lambda, t) = (\text{Data} - \text{Model } \text{AC}_5\text{B}_5\text{F}) / \sigma \chi$$

$$\chi^2 / (411300 - 5272) = 0.876 \Rightarrow 1.007$$

4570x90



bad:677=0.16%

λ (Å) $z = 1.59166$

$3 > +6.0\sigma$