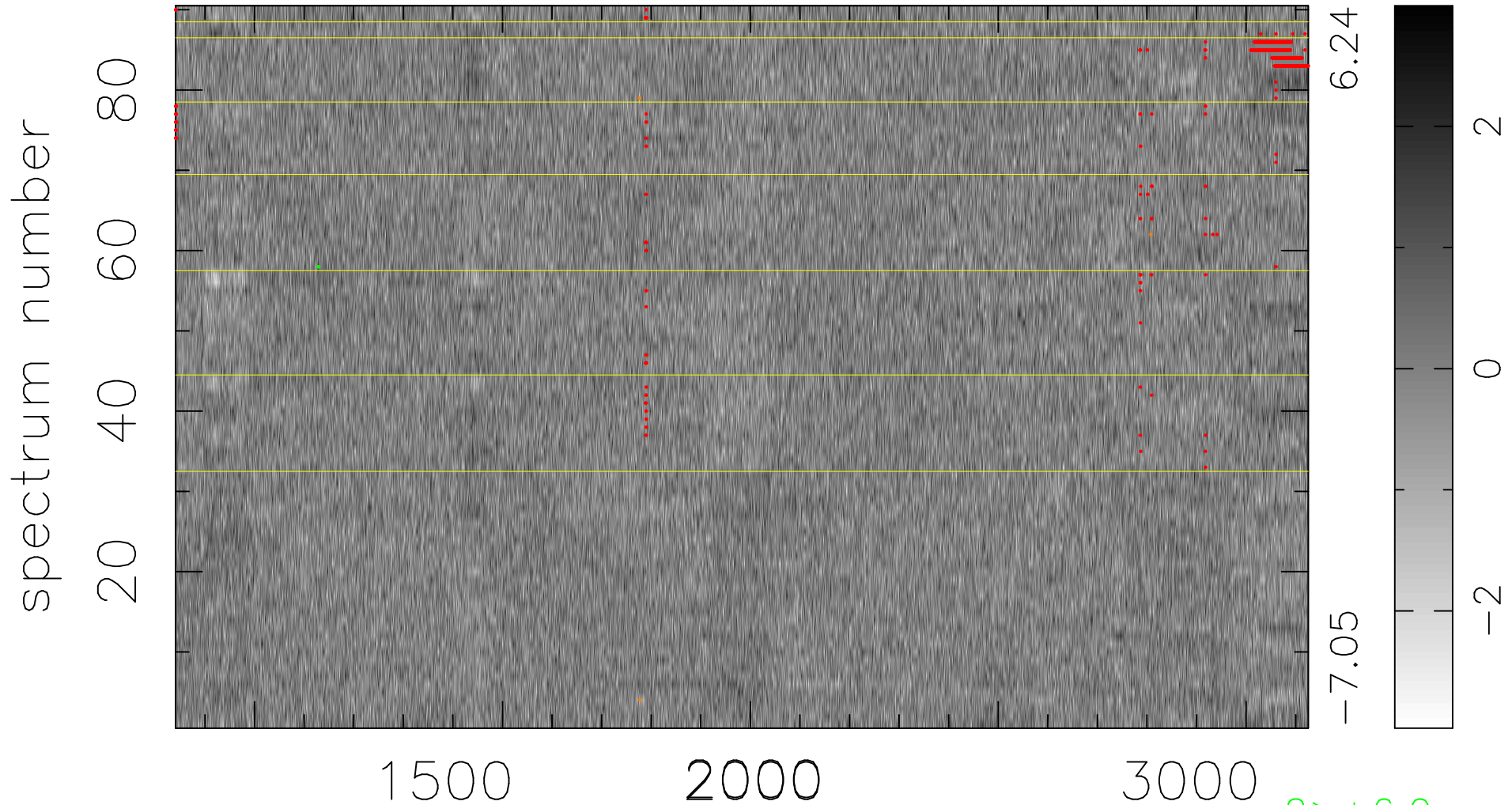


$$\chi(\lambda, t) = (\text{Data} - \text{Model AC}_5\text{F}) / \sigma \chi$$

$$\chi^2 / (411300 - 5341) = 0.903 \Rightarrow 1.007$$

4570x90



bad:698=0.17%

λ (Å) $z = 2.07994$

2 > +6.0 σ

3 < -6.0 σ