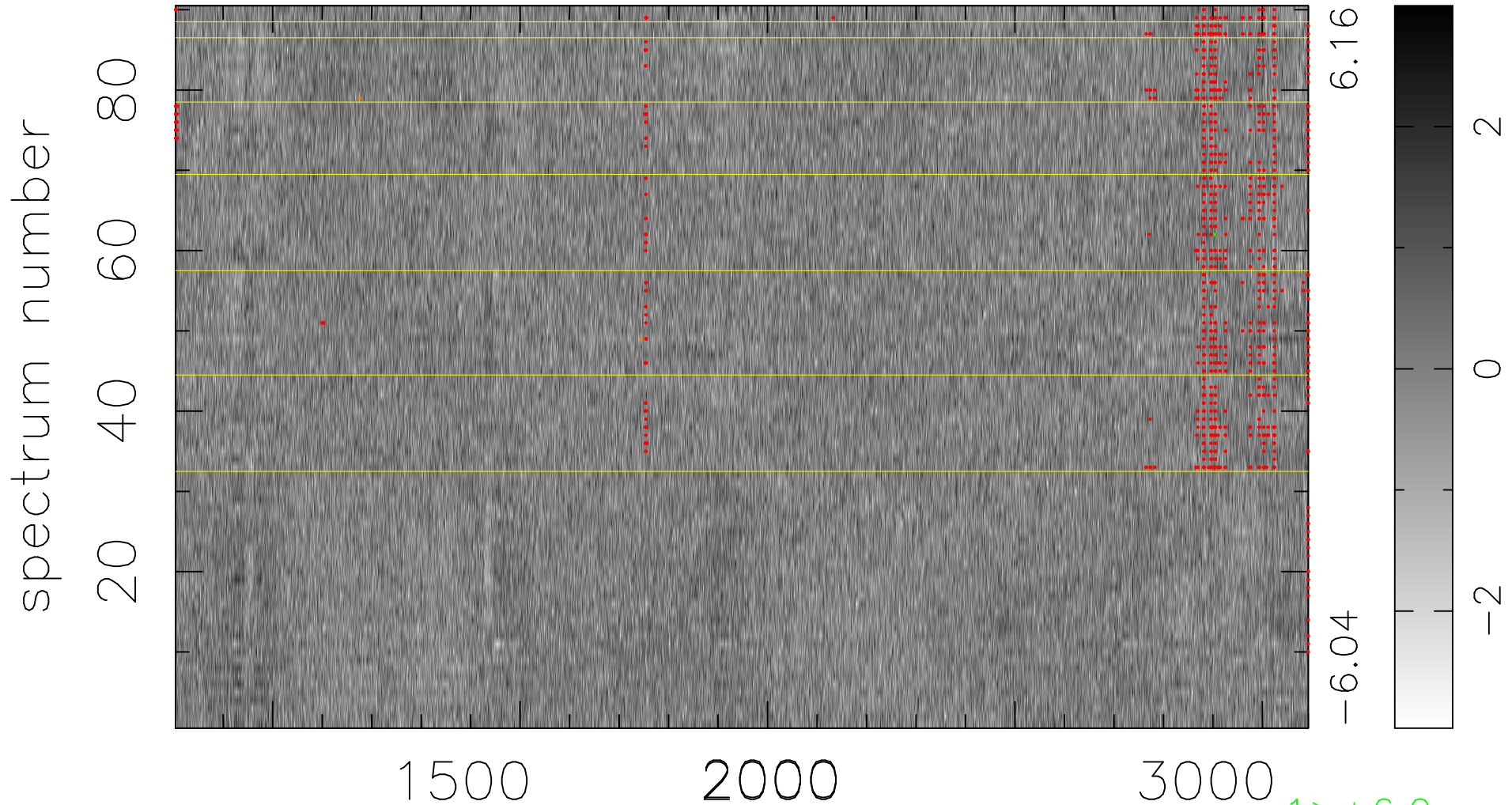


$$\chi(\lambda,t) = ( \text{Data} - \text{Model } AC_5 ) / \sigma \chi$$

$$\chi^2 / (412110 - 5249) = 1.008 \Rightarrow 1.008$$

4579x90



bad:865=0.21%

$\lambda$  (Å)  $z = 2.13081$

1 > +6.0σ

2 < -6.0σ