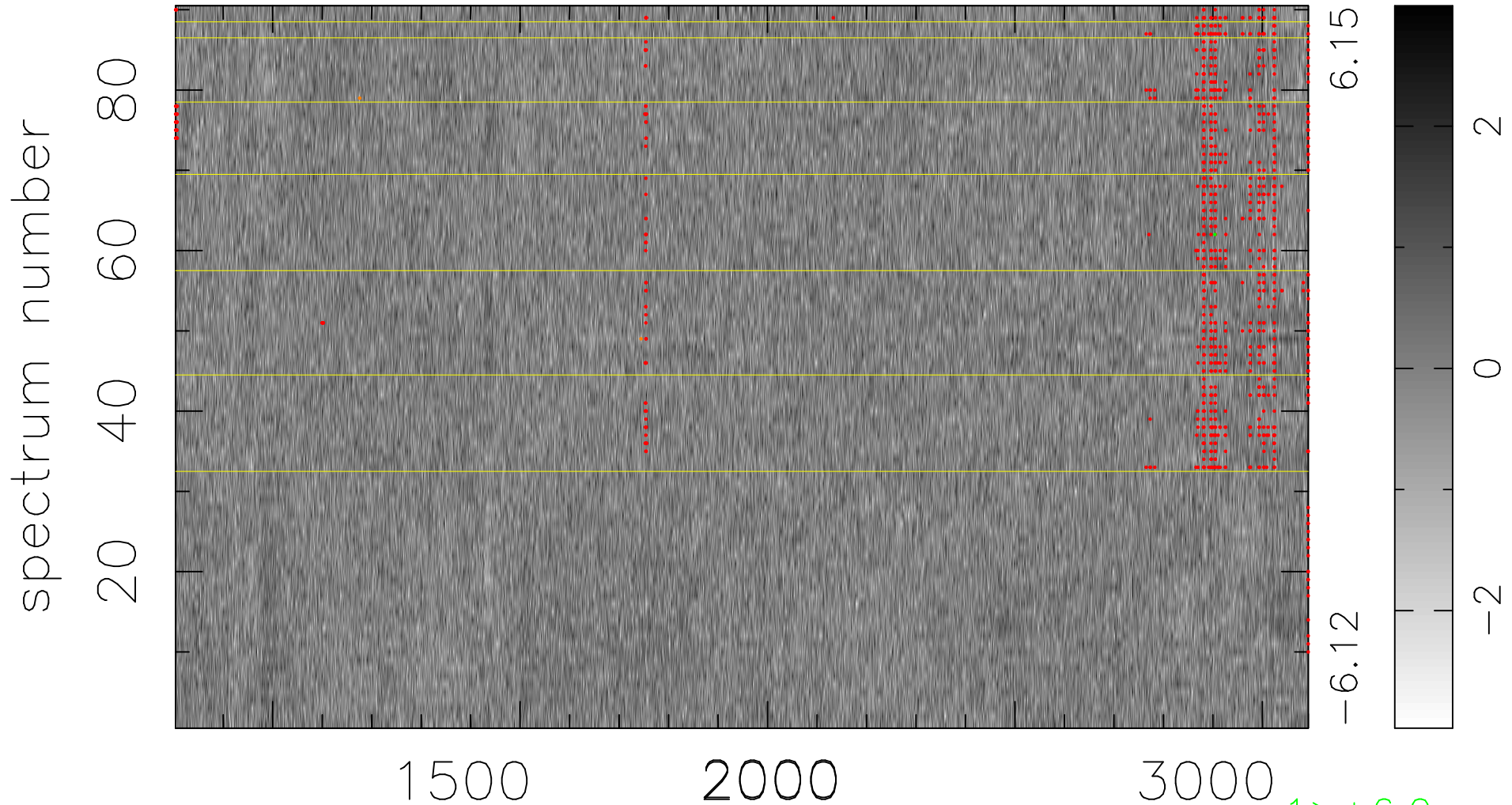


$$\chi(\lambda, t) = (\text{Data} - \text{Model } \text{AC}_5\text{B}_7\text{F}) / \sigma \chi$$

$$\chi^2 / (412110 - 5517) = 0.999 \Rightarrow 1.008$$

4579x90



bad:865=0.21%

λ (Å) $z = 2.13081$

1 > +6.0 σ

2 < -6.0 σ