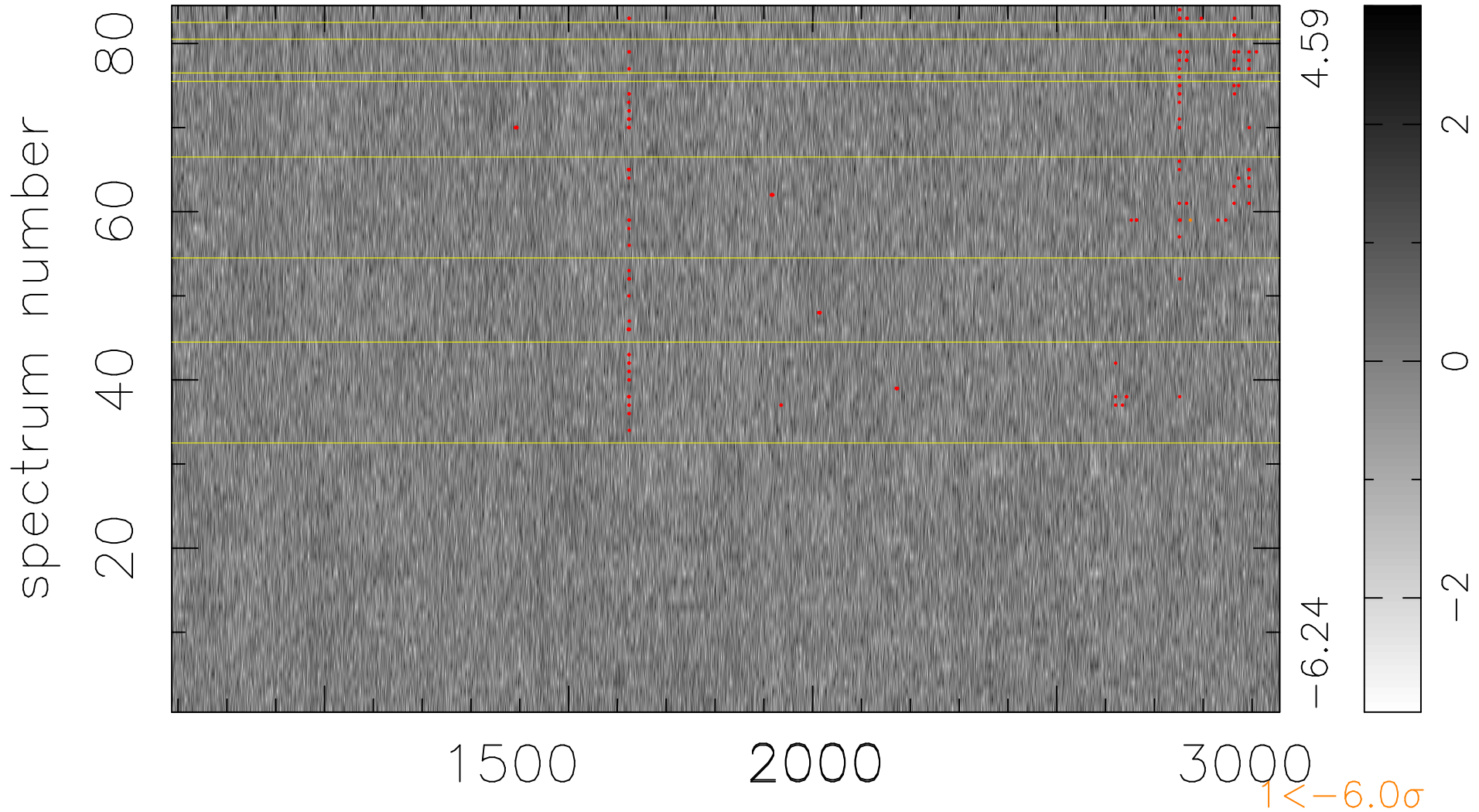


$$\chi(\lambda, t) = ( \text{Data} - \text{Model } \text{AC}_5\text{B}_7\text{F} ) / \sigma \chi$$

$$\chi^2 / (381360 - 5418) = 0.898 \Rightarrow 1.008$$

4540x84



bad:163=0.043%  $\lambda$  (Å)  $z = 2.32484$