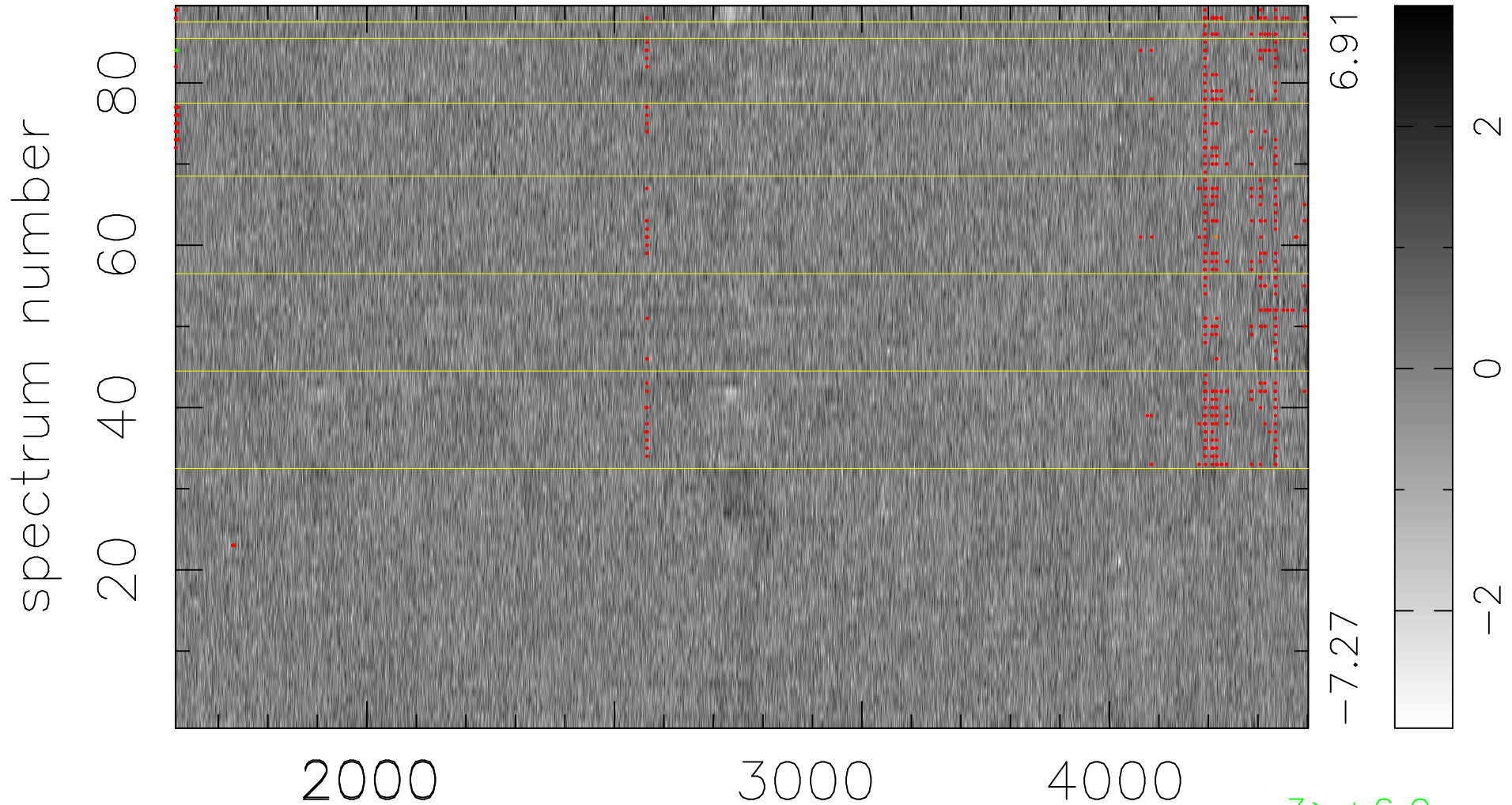


$$\chi(\lambda, t) = (\text{Data} - \text{Model AC}_5\text{F}) / \sigma \chi$$

$$\chi^2 / (407353 - 4952) = 0.905 \Rightarrow 1.007$$

4577 × 89



bad:529=0.13%

λ (Å) $z = 1.15463$

3 > +6.0σ

3 < -6.0σ